



Datasheet for ABIN6241986  
**anti-SMC1A antibody (C-Term)**



[Go to Product page](#)

2 Images

Overview

Quantity:	100 µL
Target:	SMC1A
Binding Specificity:	C-Term
Reactivity:	Human
Host:	Mouse
Clonality:	Monoclonal
Conjugate:	This SMC1A antibody is un-conjugated
Application:	Western Blotting (WB), Immunocytochemistry (ICC)

Product Details

Immunogen:	Recombinant Protein
------------	---------------------

Target Details

Target:	SMC1A
Alternative Name:	SMC1A ( <a href="#">SMC1A Products</a> )
Background:	Involved in chromosome cohesion during cell cycle and in DNA repair. Central component of cohesin complex. The cohesin complex is required for the cohesion of sister chromatids after DNA replication. The cohesin complex apparently forms a large proteinaceous ring within which sister chromatids can be trapped. At anaphase, the complex is cleaved and dissociates from chromatin, allowing sister chromatids to segregate. The cohesin complex may also play a role in spindle pole assembly during mitosis. Involved in DNA repair via its interaction with BRCA1

## Target Details

---

and its related phosphorylation by ATM, or via its phosphorylation by ATR. Works as a downstream effector both in the ATM/NBS1 branch and in the ATR/MSH2 branch of S-phase checkpoint.

UniProt: [Q14683](#)

Pathways: [Stem Cell Maintenance](#)

## Application Details

---

Application Notes: WB: 1:1000. ICC: 1:100

Restrictions: For Research Use only

## Handling

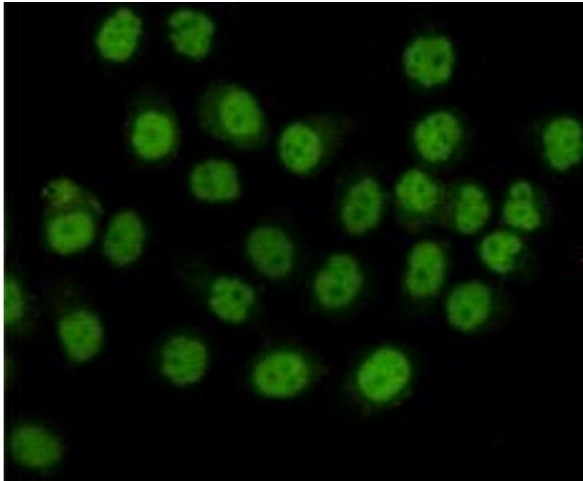
---

Format: Liquid

Storage: 4 °C,-20 °C

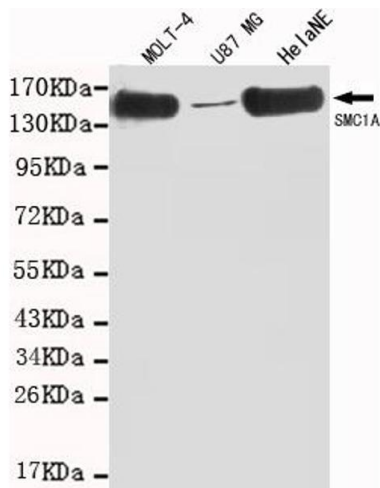
## Images

---



### Immunocytochemistry

**Image 1.** Immunocytochemistry staining of HeLa cells fixed with 4 % Paraformaldehyde and using anti-SMC1A mouse mAb(dilution 1:100).



### Western Blotting

**Image 2.** Western blot detection of SMC1A(C-term) in MOLT-4,U87 MG and HeLaNE cell lysates using SMC1A (N-terminus) mouse mAb (1:1000 diluted).Predicted band size: 143KDa.Observed band size: 143KDa.