



[Go to Product page](#)

Datasheet for ABIN6242006

anti-THRB antibody (Cleaved-Arg327)

1 Image

Overview

Quantity:	100 µL
Target:	THRB
Binding Specificity:	Cleaved-Arg327
Reactivity:	Human
Host:	Rabbit
Clonality:	Polyclonal
Conjugate:	This THRB antibody is un-conjugated
Application:	Western Blotting (WB)

Product Details

Immunogen: Synthetic Peptide

Target Details

Target:	THRB
Alternative Name:	THRB (THRB Products)
Background:	Thrombin, which cleaves bonds after Arg and Lys, converts fibrinogen to fibrin and activates factors V, VII, VIII, XIII, and, in complex with thrombomodulin, protein C. Functions in blood homeostasis, inflammation and wound healing.
UniProt:	P00734
Pathways:	Nuclear Receptor Transcription Pathway , Steroid Hormone Mediated Signaling Pathway , Sensory Perception of Sound

Application Details

Application Notes: WB: 1:1000

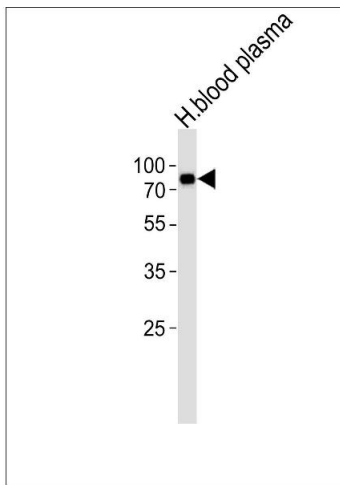
Restrictions: For Research Use only

Handling

Format: Liquid

Storage: 4 °C,-20 °C

Images



Western Blotting

Image 1. Western blot analysis of lysate from human blood plasma tissue lysate, using THR B Antibody (, Cleaved-Arg327)(ABIN6242006). ABIN6242006 was diluted at 1:1000. A goat anti-rabbit IgG H&L(HRP) at 1:5000 dilution was used as the secondary antibody. Lysate at 35 µg.