

Datasheet for ABIN6242033

## anti-RPL26L antibody



[Go to Product page](#)

### 1 Image

#### Overview

Quantity:	100 µL
Target:	RPL26L
Reactivity:	Human, Mouse, Rat
Host:	Rabbit
Clonality:	Polyclonal
Conjugate:	This RPL26L antibody is un-conjugated
Application:	Western Blotting (WB)

#### Product Details

Immunogen: Synthetic Peptide

#### Target Details

Target:	RPL26L
Alternative Name:	RPL26L ( <a href="#">RPL26L Products</a> )
UniProt:	<a href="#">Q9UNX3</a>

#### Application Details

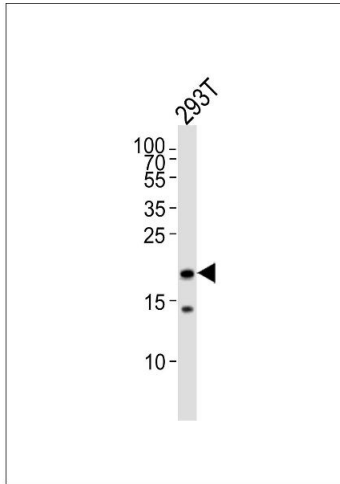
Application Notes:	WB: 1:1000
Restrictions:	For Research Use only

## Handling

Format: Liquid

Storage: 4 °C,-20 °C

## Images



### Western Blotting

**Image 1.** Western blot analysis of lysate from 293T cell line, using RPL26L Antibody (ABIN6242033). ABIN6242033 was diluted at 1:1000. A goat anti-rabbit IgG H&L(HRP) at 1:5000 dilution was used as the secondary antibody. Lysate at 35 µg.