

Datasheet for ABIN6242057
anti-SIX Homeobox 6 antibody

2 Images

[Go to Product page](#)

Overview

| | |
|--------------|--|
| Quantity: | 100 µL |
| Target: | SIX Homeobox 6 (SIX6) |
| Reactivity: | Human, Mouse, Rat |
| Host: | Rabbit |
| Clonality: | Polyclonal |
| Conjugate: | This SIX Homeobox 6 antibody is un-conjugated |
| Application: | Western Blotting (WB), Immunofluorescence (IF) |

Product Details

| | |
|------------|-------------------|
| Immunogen: | Synthetic Peptide |
|------------|-------------------|

Target Details

| | |
|-------------------|--|
| Target: | SIX Homeobox 6 (SIX6) |
| Alternative Name: | SIX6 (SIX6 Products) |
| Background: | May be involved in eye development. |
| UniProt: | O95475 |

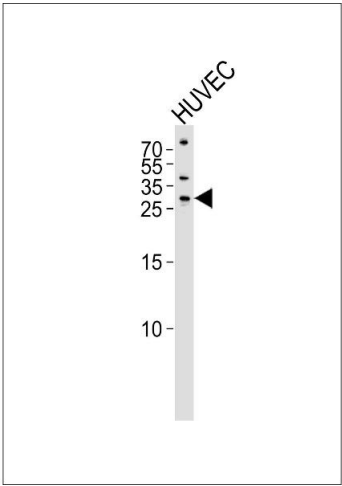
Application Details

| | |
|--------------------|-----------------------|
| Application Notes: | IF: 1:100. WB: 1:1000 |
| Restrictions: | For Research Use only |

Handling

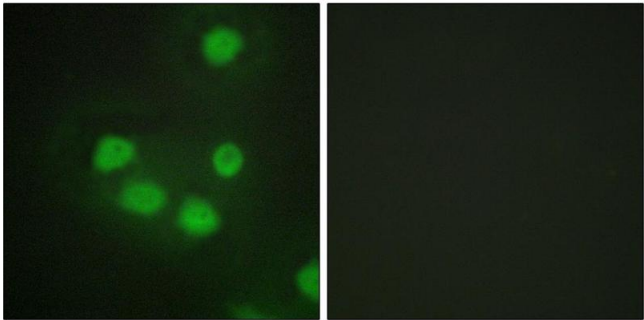
| | |
|----------|-------------|
| Format: | Liquid |
| Storage: | 4 °C,-20 °C |

Images



Western Blotting

Image 1. Western blot analysis of lysate from HUVEC cell line,using SIX6 Antibody (ABIN6242057). ABIN6242057 was diluted at 1:1000. A goat anti-rabbit IgG H&L(HRP) at 1:5000 dilution was used as the secondary antibody.Lysate at 35 μg.



Immunofluorescence

Image 2. Immunofluorescence analysis of HepG2 cells, using SIX6 antibody.