



[Go to Product page](#)

Datasheet for ABIN6242059  
**anti-GUSBP2 antibody**

1 Image

### Overview

Quantity:	100 µL
Target:	GUSBP2
Reactivity:	Human
Host:	Rabbit
Clonality:	Polyclonal
Conjugate:	This GUSBP2 antibody is un-conjugated
Application:	Western Blotting (WB)

### Product Details

Immunogen: Synthetic Peptide

### Target Details

Target:	GUSBP2
Alternative Name:	GUSBL1 ( <a href="#">GUSBP2 Products</a> )
UniProt:	<a href="#">Q15486</a>

### Application Details

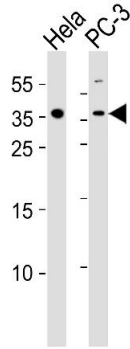
Application Notes:	WB: 1:1000
Restrictions:	For Research Use only

## Handling

Format: Liquid

Storage: 4 °C,-20 °C

## Images



### Western Blotting

**Image 1.** Western blot analysis of lysates from HeLa,PC-3 cell line (from left to right),using GUSBL1 Antibody (ABIN6242059). ABIN6242059 was diluted at 1:1000 at each lane. A goat anti-rabbit IgG H&L(HRP) at 1:5000 dilution was used as the secondary antibody.Lysates at 35  $\mu$ g per lane.