



[Go to Product page](#)

Datasheet for ABIN6242073  
**anti-CD300d antibody**

1 Image

### Overview

Quantity:	100 µL
Target:	CD300d (CD300LD)
Reactivity:	Human, Mouse
Host:	Rabbit
Clonality:	Polyclonal
Conjugate:	This CD300d antibody is un-conjugated
Application:	Western Blotting (WB)

### Product Details

Immunogen: A synthesized peptide

### Target Details

Target:	CD300d (CD300LD)
Alternative Name:	CD300d ( <a href="#">CD300LD Products</a> )
UniProt:	<a href="#">Q6UXZ3</a>

### Application Details

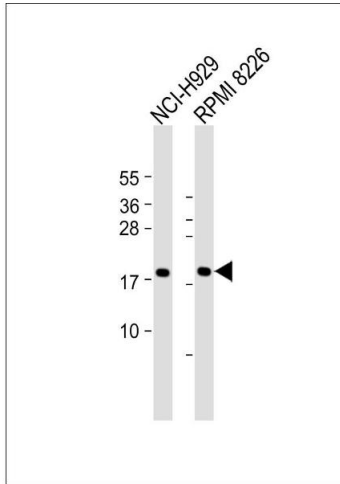
Application Notes:	WB: 1:1000
Restrictions:	For Research Use only

## Handling

Format: Liquid

Storage: 4 °C,-20 °C

## Images



### Western Blotting

**Image 1.** All lanes : Anti-CD300d Antibody at 1:1000 dilution  
Lane 1: NCI- whole cell lysate Lane 2: RI 8226 whole cell lysate  
Lysates/proteins at 20 µg per lane. Secondary Goat Anti-Rabbit IgG, (H+L), Peroxidase conjugated at 1/10000 dilution. Predicted band size : 22 kDa  
Blocking/Dilution buffer: 5 % NFDM/TBST.