

Datasheet for ABIN6242112
anti-BAG1 antibody



[Go to Product page](#)

1 Image

Overview

Quantity:	100 µL
Target:	BAG1
Reactivity:	Human
Host:	Mouse
Clonality:	Monoclonal
Application:	Western Blotting (WB)

Product Details

Immunogen: Recombinant Protein

Target Details

Target:	BAG1
Alternative Name:	Bag1 (BAG1 Products)
Background:	Bag 1,BAG family molecular chaperone regulator 1,BAG-1,BAG1,BAG1_HUMAN,BCL 2 Associated Athanogene 1,BCL 2 associated athanogene,BCL 2 binding athanogene 1,Bcl-2-associated athanogene 1,BCL2 associated athanogene 1,BCL2 associated athanogene,Glucocorticoid receptor-associated protein RAP46,HAP1,Haptoglobin,RAP 46,RAP46.
UniProt:	Q99933

Application Details

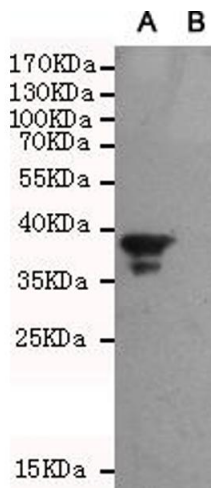
Application Notes: Optimal working dilution should be determined by the investigator.

Restrictions: For Research Use only

Handling

Format: Liquid

Images



Western Blotting

Image 1. Western blot analysis of extracts from CHO-K1 cells, transfected with a human pEGFP-C1-BAG1 construct (A) or transfected with a human pEGFP-C1 construct (B), using Bag1 mouse mAb (1:1000 diluted).