



[Go to Product page](#)

Datasheet for ABIN6242118  
**anti-ESRG antibody (AA 27-61)**

1 Image

Overview

Quantity:	400 µL
Target:	ESRG
Binding Specificity:	AA 27-61
Reactivity:	Human
Host:	Rabbit
Clonality:	Polyclonal
Conjugate:	This ESRG antibody is un-conjugated
Application:	Western Blotting (WB)

Product Details

Immunogen:	This HESRG antibody is generated from a rabbit immunized with a KLH conjugated synthetic peptide between 27-61 amino acids from the Central region of human HESRG.
Clone:	RB50295
Isotype:	Ig Fraction
Purification:	This antibody is purified through a protein A column, followed by peptide affinity purification.

Target Details

Target:	ESRG
Alternative Name:	HESRG ( <a href="#">ESRG Products</a> )
Molecular Weight:	24186

## Target Details

UniProt: [Q1W209](#)

## Application Details

Application Notes: WB: 1:1000

Restrictions: For Research Use only

## Handling

Format: Liquid

Buffer: Purified polyclonal antibody supplied in PBS with 0.09 % (W/V) sodium azide.

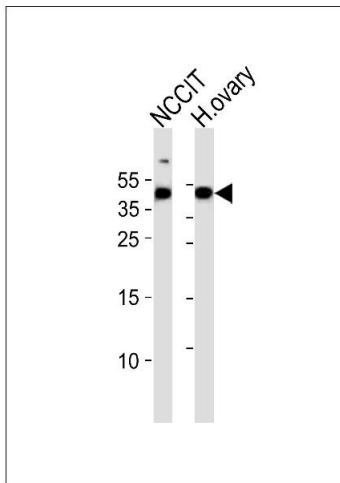
Preservative: Sodium azide

Precaution of Use: This product contains Sodium azide: a POISONOUS AND HAZARDOUS SUBSTANCE which should be handled by trained staff only.

Storage: 4 °C,-20 °C

Expiry Date: 6 months

## Images



### Western Blotting

**Image 1.** Western blot analysis of lysates from NCCIT cell line and human ovary tissue lysate (from left to right), using HESRG Antibody (Center) (ABIN6242118 and ABIN6577557). (ABIN6242118 and ABIN6577557) was diluted at 1:1000 at each lane. A goat anti-rabbit IgG H&L(HRP) at 1:5000 dilution was used as the secondary antibody. Lysates at 35 µg per lane.