

Datasheet for ABIN6242119
anti-EEF1A1P5 antibody (AA 430-462)[Go to Product page](#)

3 Images

Overview

Quantity:	200 µL
Target:	EEF1A1P5
Binding Specificity:	AA 430-462
Reactivity:	Human
Host:	Rabbit
Clonality:	Polyclonal
Conjugate:	This EEF1A1P5 antibody is un-conjugated
Application:	Flow Cytometry (FACS), Immunofluorescence (IF), Western Blotting (WB)

Product Details

Immunogen:	This EEF1A1P5 antibody is generated from a rabbit immunized with a KLH conjugated synthetic peptide between 430-462 amino acids from human EEF1A1P5.
Clone:	RB55227
Isotype:	Ig Fraction
Predicted Reactivity:	B, Ha, Hs, M, Rb, Rat, C
Purification:	This antibody is purified through a protein A column, followed by peptide affinity purification.

Target Details

Target:	EEF1A1P5
Alternative Name:	EEF1A1P5 (EEF1A1P5 Products)

Target Details

Background: This protein promotes the GTP-dependent binding of aminoacyl-tRNA to the A-site of ribosomes during protein biosynthesis.

Molecular Weight: 50185

UniProt: [Q5VTE0](#)

Application Details

Application Notes: IF: 1:25. WB: 1:1000-1:2000. FC: 1:25

Restrictions: For Research Use only

Handling

Format: Liquid

Buffer: Purified polyclonal antibody supplied in PBS with 0.09 % (W/V) sodium azide.

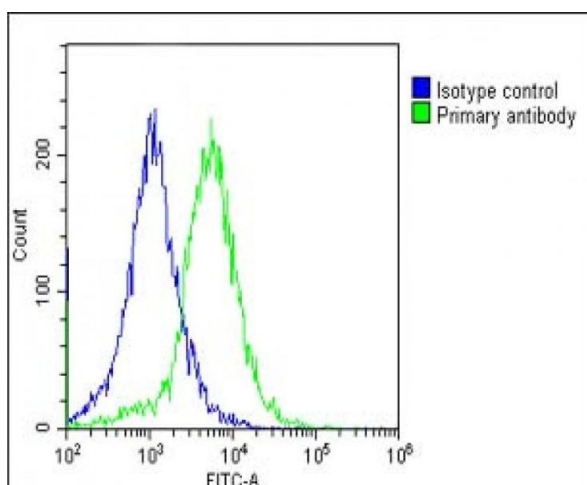
Preservative: Sodium azide

Precaution of Use: This product contains Sodium azide: a POISONOUS AND HAZARDOUS SUBSTANCE which should be handled by trained staff only.

Storage: 4 °C,-20 °C

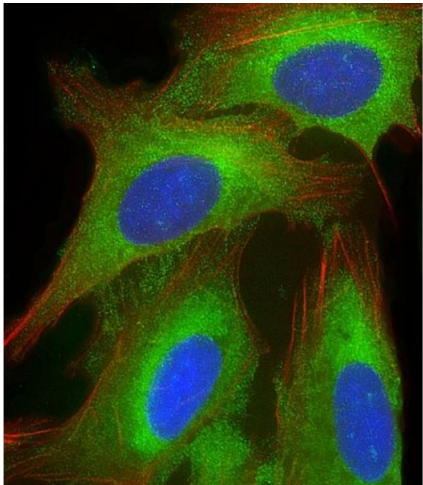
Expiry Date: 6 months

Images



Flow Cytometry

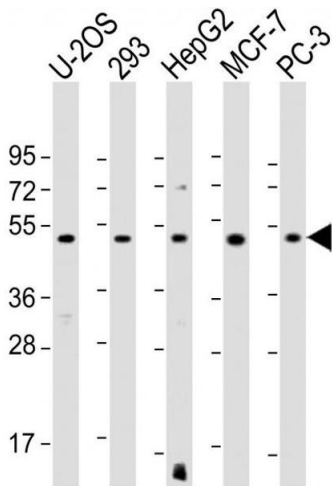
Image 1. Overlay histogram showing HepG2 cells stained with (ABIN6242119 and ABIN6578759)(green line). The cells were fixed with 2 % paraformaldehyde (10 min) and then permeabilized with 90 % methanol for 10 min. The cells were then incubated in 2 % bovine serum albumin to block non-specific protein-protein interactions followed by the antibody ((ABIN6242119 and ABIN6578759), 1:25 dilution) for 60 min at 37 °C. The secondary antibody used was Goat-Anti-Rabbit IgG, DyLight® 488 Conjugated Highly Cross-Adsorbed(OE188374) at 1/200 dilution for 40 min at 37 °C. Isotype control antibody (blue line) was rabbit IgG1 (1 μ



g/1x10⁶ cells) used under the same conditions. Acquisition of >10,000 events was performed..

Immunofluorescence

Image 2. Immunofluorescent analysis of 4 % paraformaldehyde-fixed, 0.1 % Triton X-100 permeabilized U-2 OS (human osteosarcoma cell line) cells labeling EEF1A1P5 with (ABIN6242119 and ABIN6578759) at 1/25 dilution, followed by Dylight® 488-conjugated goat anti-rabbit IgG (NK179883) secondary antibody at 1/200 dilution (green). Immunofluorescence image showing cytoplasm staining on U-2 OS cell line. Cytoplasmic actin is detected with Dylight® 554 Phalloidin (PD18466410) at 1/100 dilution (red). The nuclear counter stain is DI (blue).



Western Blotting

Image 3. All lanes : Anti-EEF1A1P5 Antibody (C-Term) at 1:1000-1:2000 dilution Lane 1: U-2OS whole cell lysate Lane 2: 293 whole cell lysate Lane 3: HepG2 whole cell lysate Lane 4: MCF-7 whole cell lysate Lane 5: PC-3 whole cell lysate Lysates/proteins at 20 µg per lane. Secondary Goat Anti-Rabbit IgG, (H+L), Peroxidase conjugated at 1/10000 dilution. Predicted band size : 50 kDa Blocking/Dilution buffer: 5 % NFDM/TBST.