



[Go to Product page](#)

Datasheet for ABIN6242123
anti-DVL-1 antibody (AA 39-71)

1 Image

Overview

Quantity:	200 µL
Target:	DVL-1 (DVL1P1)
Binding Specificity:	AA 39-71
Reactivity:	Human
Host:	Rabbit
Clonality:	Polyclonal
Conjugate:	This DVL-1 antibody is un-conjugated
Application:	Western Blotting (WB)

Product Details

Immunogen:	This DVL1L1 antibody is generated from a rabbit immunized with a KLH conjugated synthetic peptide between 39-71 amino acids from human DVL1L1.
Clone:	RB54012
Isotype:	Ig Fraction
Purification:	This antibody is purified through a protein A column, followed by peptide affinity purification.

Target Details

Target:	DVL-1 (DVL1P1)
Alternative Name:	DVL1L1 (DVL1P1 Products)
Background:	May play a role in the signal transduction pathway mediated by multiple Wnt genes.

Target Details

Molecular Weight: 73254

UniProt: [P54792](#)

Application Details

Application Notes: WB: 1:2000

Restrictions: For Research Use only

Handling

Format: Liquid

Buffer: Purified polyclonal antibody supplied in PBS with 0.09 % (W/V) sodium azide.

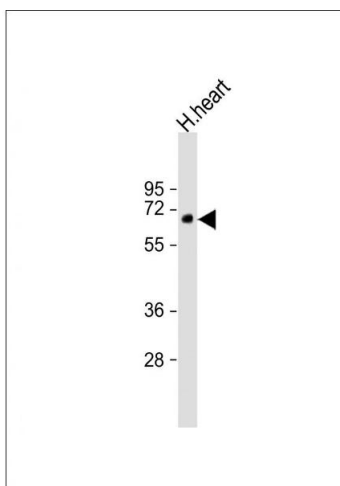
Preservative: Sodium azide

Precaution of Use: This product contains Sodium azide: a POISONOUS AND HAZARDOUS SUBSTANCE which should be handled by trained staff only.

Storage: 4 °C, -20 °C

Expiry Date: 6 months

Images



Western Blotting

Image 1. Anti-DVL1L1 Antibody (N-Term) at 1:2000 dilution + human heart lysate Lysates/proteins at 20 µg per lane. Secondary Goat Anti-Rabbit IgG, (H+L), Peroxidase conjugated at 1/10000 dilution. Predicted band size : 73 kDa
Blocking/Dilution buffer: 5 % NFDN/TBST.