



Datasheet for ABIN6242124

## anti-Solute Carrier Family 17 (Vesicular Glutamate Transporter), Member 6 (SLC17A6) (AA 255-289) antibody



[Go to Product page](#)

### 2 Images

#### Overview

Quantity:	200 µL
Target:	Solute Carrier Family 17 (Vesicular Glutamate Transporter), Member 6 (SLC17A6)
Binding Specificity:	AA 255-289
Reactivity:	Rat, Human
Host:	Rabbit
Clonality:	Polyclonal
Conjugate:	Un-conjugated
Application:	Western Blotting (WB), Flow Cytometry (FACS)

#### Product Details

Immunogen:	This SLC17A6 antibody is generated from a rabbit immunized with a KLH conjugated synthetic peptide between 255-289 amino acids of human SLC17A6.
Clone:	RB57907
Isotype:	IgG
Predicted Reactivity:	B, M
Purification:	This antibody is purified through a protein A column, followed by peptide affinity purification.

#### Target Details

Target:	Solute Carrier Family 17 (Vesicular Glutamate Transporter), Member 6 (SLC17A6)
Alternative Name:	SLC17A6 ( <a href="#">SLC17A6 Products</a> )

## Target Details

**Background:** Mediates the uptake of glutamate into synaptic vesicles at presynaptic nerve terminals of excitatory neural cells. May also mediate the transport of inorganic phosphate.

**Molecular Weight:** 64392

**UniProt:** [Q9P2U8](#)

## Application Details

**Application Notes:** WB: 1:2000. FC: 1:25

**Restrictions:** For Research Use only

## Handling

**Format:** Liquid

**Buffer:** Purified polyclonal antibody supplied in PBS with 0.09 % (W/V) sodium azide.

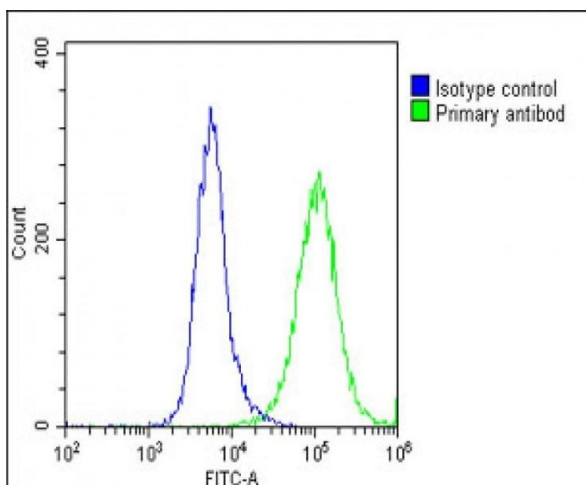
**Preservative:** Sodium azide

**Precaution of Use:** This product contains Sodium azide: a POISONOUS AND HAZARDOUS SUBSTANCE which should be handled by trained staff only.

**Storage:** 4 °C,-20 °C

**Expiry Date:** 6 months

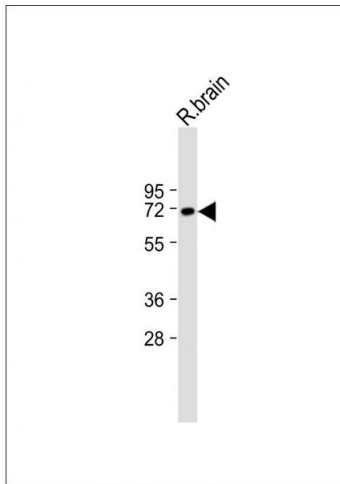
## Images



### Flow Cytometry

**Image 1.** Overlay histogram showing U-87 MG cells stained with (ABIN6242124 and ABIN6578885)(green line). The cells were fixed with 2 % paraformaldehyde (10 min) and then permeabilized with 90 % methanol for 10 min. The cells were then incubated in 2 % bovine serum albumin to block non-specific protein-protein interactions followed by the antibody ((ABIN6242124 and ABIN6578885), 1:25 dilution) for 60 min at 37 °C. The secondary antibody used was Goat-Anti-Rabbit IgG, DyLight® 488 Conjugated Highly Cross-Adsorbed(1583138) at 1/200 dilution for 40 min at 37 °C. Isotype control antibody (blue line) was rabbit IgG1 (1 μ

g/1x10<sup>6</sup> cells) used under the same conditions. Acquisition of >10,000 events was performed.



### Western Blotting

**Image 2.** Anti-SLC17A6 Antibody (Center) at 1:2000 dilution + Rat brain lysate Lysates/proteins at 20 µg per lane. Secondary Goat Anti-Rabbit IgG, (H+L), Peroxidase conjugated at 1/10000 dilution. Predicted band size : 64 kDa Blocking/Dilution buffer: 5 % NFDM/TBST.