



Datasheet for ABIN6242128
anti-Bone Area 1 antibody (AA 93-126)



[Go to Product page](#)

1 Image

Overview

Quantity:	400 µL
Target:	Bone Area 1 (BA1)
Binding Specificity:	AA 93-126
Reactivity:	Zebrafish (Danio rerio)
Host:	Rabbit
Clonality:	Polyclonal
Conjugate:	This Bone Area 1 antibody is un-conjugated
Application:	Western Blotting (WB)

Product Details

Immunogen:	This (DANRE) ba1 antibody is generated from a rabbit immunized with a KLH conjugated synthetic peptide between 93-126 amino acids from the Central region of DANRE ba1.
Clone:	RB46518
Isotype:	IgG
Purification:	This antibody is purified through a protein A column, followed by peptide affinity purification.

Target Details

Target:	Bone Area 1 (BA1)
Alternative Name:	ba1 (BA1 Products)
Background:	Involved in oxygen transport from gills to the various peripheral tissues.

Target Details

Molecular Weight: 16389

UniProt: [Q90486](#)

Application Details

Application Notes: WB: 1:1000

Restrictions: For Research Use only

Handling

Format: Liquid

Buffer: Purified polyclonal antibody supplied in PBS with 0.09 % (W/V) sodium azide.

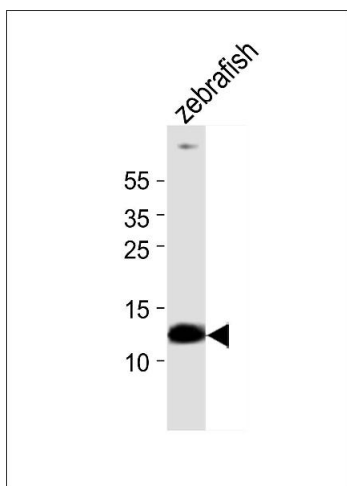
Preservative: Sodium azide

Precaution of Use: This product contains Sodium azide: a POISONOUS AND HAZARDOUS SUBSTANCE which should be handled by trained staff only.

Storage: 4 °C, -20 °C

Expiry Date: 6 months

Images



Western Blotting

Image 1. Western blot analysis of lysate from zebrafish tissue, using (DANRE) ba1 Antibody (Center) (ABIN6242128 and ABIN6577723). (ABIN6242128 and ABIN6577723) was diluted at 1:1000. A goat anti-rabbit IgG H&L(HRP) at 1:10000 dilution was used as the secondary antibody. Lysate at 5 µg.