



[Go to Product page](#)

Datasheet for ABIN6242140
anti-SUZ12 antibody (AA 496-530)

1 Image

Overview

Quantity:	400 µL
Target:	SUZ12
Binding Specificity:	AA 496-530
Reactivity:	Mouse
Host:	Rabbit
Clonality:	Polyclonal
Conjugate:	This SUZ12 antibody is un-conjugated
Application:	Western Blotting (WB)

Product Details

Immunogen:	This Mouse Suz12 antibody is generated from a rabbit immunized with a KLH conjugated synthetic peptide between 496-530 amino acids from the Central region of Mouse Suz12.
Clone:	RB51502
Isotype:	Ig Fraction
Predicted Reactivity:	H

Target Details

Target:	SUZ12
Alternative Name:	Suz12 (SUZ12 Products)
Background:	Polycomb group (PcG) protein. Component of the PRC2/EED- EZH2 complex, which methylates

Target Details

'Lys-9' (H3K9me) and 'Lys-27' (H3K27me) of histone H3, leading to transcriptional repression of the affected target gene. The PRC2/EED-EZH2 complex may also serve as a recruiting platform for DNA methyltransferases, thereby linking two epigenetic repression systems (By similarity). Genes repressed by the PRC2/EED-EZH2 complex include HOXA7, HOXB6 and HOXC8.

Molecular Weight: 83026

UniProt: [Q80U70](#)

Application Details

Application Notes: WB: 1:1000

Restrictions: For Research Use only

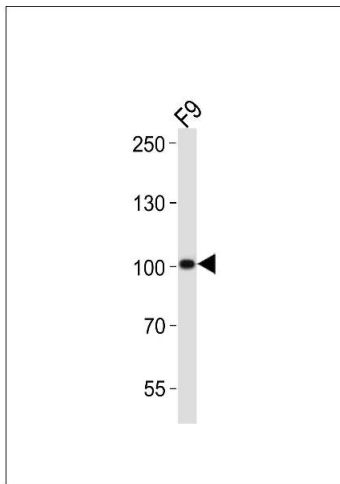
Handling

Format: Liquid

Storage: 4 °C,-20 °C

Expiry Date: 6 months

Images



Western Blotting

Image 1. Western blot analysis of lysate from mouse F9 cell line, using Suz12 Antibody (Center) (ABIN6242140 and ABIN6577878). (ABIN6242140 and ABIN6577878) was diluted at 1:1000. A goat anti-rabbit IgG H&L(HRP) at 1:10000 dilution was used as the secondary antibody. Lysate at 20 µg.