



[Go to Product page](#)

Datasheet for ABIN6242150
anti-AHCTF1 antibody (AA 1210-1260)

1 Image

Overview

Quantity:	400 µL
Target:	AHCTF1
Binding Specificity:	AA 1210-1260
Reactivity:	Human
Host:	Rabbit
Clonality:	Polyclonal
Conjugate:	This AHCTF1 antibody is un-conjugated
Application:	Western Blotting (WB)

Product Details

Immunogen:	This antibody is generated from a rabbit immunized with a KLH conjugated synthetic peptide between 1210-1260 amino acids from human.
Clone:	RB46675
Isotype:	Ig Fraction
Purification:	This antibody is purified through a protein A column, followed by peptide affinity purification.

Target Details

Target:	AHCTF1
Alternative Name:	AHCTF1 (AHCTF1 Products)
Background:	Required for the assembly of a functional nuclear pore complex (NPC) on the surface of

Target Details

chromosomes as nuclei form at the end of mitosis. May initiate NPC assembly by binding to chromatin and recruiting the Nup107-160 subcomplex of the NPC. Also required for the localization of the Nup107-160 subcomplex of the NPC to the kinetochore during mitosis and for the completion of cytokinesis.

Molecular Weight: 252498

UniProt: [Q8WYP5](#)

Application Details

Application Notes: WB: 1:1000

Restrictions: For Research Use only

Handling

Format: Liquid

Buffer: Purified polyclonal antibody supplied in PBS with 0.09 % (W/V) sodium azide.

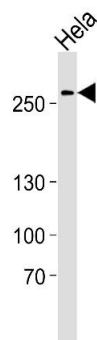
Preservative: Sodium azide

Precaution of Use: This product contains Sodium azide: a POISONOUS AND HAZARDOUS SUBSTANCE which should be handled by trained staff only.

Storage: 4 °C,-20 °C

Expiry Date: 6 months

Images



Western Blotting

Image 1. Western blot analysis of lysate from HeLa cell line, using Phospho-human-AHCTF1 . ctrl (ABIN6242150 and ABIN6577540). (ABIN6242150 and ABIN6577540) was diluted at 1:1000. A goat anti-rabbit IgG H&L(HRP) at 1:5000 dilution was used as the secondary antibody. Lysate at 35 µg.