

Datasheet for ABIN6242155

anti-Adenylate Kinase 2 antibody (N-Term)[Go to Product page](#)**1** Image

Overview

Quantity:	400 µL
Target:	Adenylate Kinase 2 (AK2)
Binding Specificity:	AA 2-36, N-Term
Reactivity:	Zebrafish (Danio rerio)
Host:	Rabbit
Clonality:	Polyclonal
Conjugate:	This Adenylate Kinase 2 antibody is un-conjugated
Application:	Western Blotting (WB)

Product Details

Immunogen:	This (DANRE) ak2 antibody is generated from a rabbit immunized with a KLH conjugated synthetic peptide between 2-36 amino acids from the N-terminal region of (DANRE) ak2.
Clone:	RB46461
Isotype:	Ig Fraction
Purification:	This antibody is purified through a protein A column, followed by peptide affinity purification.

Target Details

Target:	Adenylate Kinase 2 (AK2)
Alternative Name:	ak2 (AK2 Products)
Background:	Catalyzes the reversible transfer of the terminal phosphate group between ATP and AMP. Plays

Target Details

an important role in cellular energy homeostasis and in adenine nucleotide metabolism. Adenylate kinase activity is critical for regulation of the phosphate utilization and the AMP de novo biosynthesis pathways. Plays a key role in hematopoiesis.

Molecular Weight:	26616
UniProt:	Q1L8L9
Pathways:	Nucleotide Phosphorylation , Ribonucleoside Biosynthetic Process

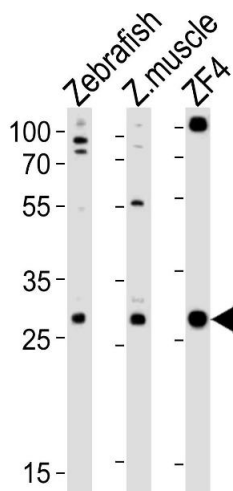
Application Details

Application Notes:	WB: 1:1000
Restrictions:	For Research Use only

Handling

Format:	Liquid
Buffer:	Purified polyclonal antibody supplied in PBS with 0.09 % (W/V) sodium azide.
Preservative:	Sodium azide
Precaution of Use:	This product contains Sodium azide: a POISONOUS AND HAZARDOUS SUBSTANCE which should be handled by trained staff only.
Storage:	4 °C,-20 °C
Expiry Date:	6 months

Images



Western Blotting

Image 1. Western blot analysis of lysates from Zebrafish, zebra fish muscle tissue lysate, ZF4 cell line (from left to right), using (DANRE) ak2 Antibody (N-term) Azb18720b. Azb18720b was diluted at 1:1000 at each lane. A goat anti-rabbit IgG H&L(HRP) at 1:10000 dilution was used as the secondary antibody. Lysates at 20 µg per lane.