

Datasheet for ABIN6242172

anti-ATP5E antibody (AA 21-51)[Go to Product page](#)**1** Image

Overview

Quantity:	200 µL
Target:	ATP5E
Binding Specificity:	AA 21-51
Reactivity:	Human
Host:	Rabbit
Clonality:	Polyclonal
Conjugate:	This ATP5E antibody is un-conjugated
Application:	Western Blotting (WB)

Product Details

Immunogen:	This ATP5E antibody is generated from a rabbit immunized with a KLH conjugated synthetic peptide between 21-51 amino acids from human ATP5E.
Clone:	RB53868
Isotype:	Ig Fraction
Purification:	This antibody is purified through a protein A column, followed by peptide affinity purification.

Target Details

Target:	ATP5E
Alternative Name:	ATP5E (ATP5E Products)
Background:	Mitochondrial membrane ATP synthase (F(1)F(0) ATP synthase or Complex V) produces ATP

Target Details

from ADP in the presence of a proton gradient across the membrane which is generated by electron transport complexes of the respiratory chain. F-type ATPases consist of two structural domains, F(1) - containing the extramembraneous catalytic core, and F(0) - containing the membrane proton channel, linked together by a central stalk and a peripheral stalk. During catalysis, ATP synthesis in the catalytic domain of F(1) is coupled via a rotary mechanism of the central stalk subunits to proton translocation. Part of the complex F(1) domain and of the central stalk which is part of the complex rotary element. Rotation of the central stalk against the surrounding $\alpha(3)\beta(3)$ subunits leads to hydrolysis of ATP in three separate catalytic sites on the beta subunits (By similarity).

Molecular Weight: 5780

UniProt: [P56381](#)

Pathways: [Proton Transport, Ribonucleoside Biosynthetic Process](#)

Application Details

Application Notes: WB: 1:2000

Restrictions: For Research Use only

Handling

Format: Liquid

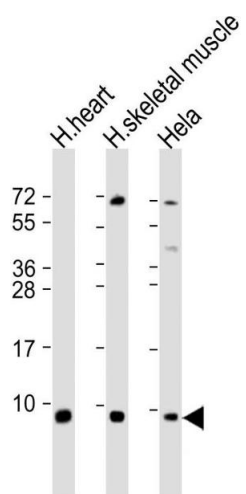
Buffer: Purified polyclonal antibody supplied in PBS with 0.09 % (W/V) sodium azide.

Preservative: Sodium azide

Precaution of Use: This product contains Sodium azide: a POISONOUS AND HAZARDOUS SUBSTANCE which should be handled by trained staff only.

Storage: 4 °C, -20 °C

Expiry Date: 6 months



Western Blotting

Image 1. All lanes : Anti-ATP5E Antibody (C-Term) at 1:2000 dilution Lane 1: human heart lysate Lane 2: human skeletal muscle lysate Lane 3: Hela whole cell lysate Lysates/proteins at 20 µg per lane. Secondary Goat Anti-Rabbit IgG, (H+L), Peroxidase conjugated at 1/10000 dilution. Predicted band size : 6 kDa Blocking/Dilution buffer: 5 % NFDM/TBST.