

Datasheet for ABIN6242180

anti-Adenosine A2a Receptor antibody (C-Term)

3 Images

[Go to Product page](#)

Overview

Quantity:	400 µL
Target:	Adenosine A2a Receptor (ADORA2A)
Binding Specificity:	AA 347-381, C-Term
Reactivity:	Human
Host:	Rabbit
Clonality:	Polyclonal
Application:	Western Blotting (WB), Flow Cytometry (FACS), Immunohistochemistry (Paraffin-embedded Sections) (IHC (p))

Product Details

Immunogen:	This ADORA2A antibody is generated from a rabbit immunized with a KLH conjugated synthetic peptide between 347-381 amino acids from the C-terminal region of human ADORA2A.
Clone:	RB52103
Isotype:	Ig Fraction
Purification:	This antibody is purified through a protein A column, followed by peptide affinity purification.

Target Details

Target:	Adenosine A2a Receptor (ADORA2A)
Alternative Name:	ADORA2A (ADORA2A Products)
Background:	Receptor for adenosine. The activity of this receptor is mediated by G proteins which activate adenylyl cyclase.

Target Details

Molecular Weight:	44707
UniProt:	P29274
Pathways:	Neurotrophin Signaling Pathway , cAMP Metabolic Process , Synaptic Membrane , Feeding Behaviour , Cancer Immune Checkpoints

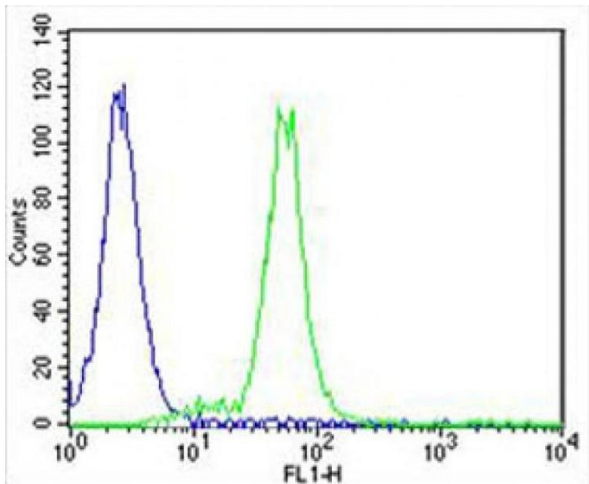
Application Details

Application Notes:	WB: 1:1000. IHC-P: 1:25. FC: 1:25
Restrictions:	For Research Use only

Handling

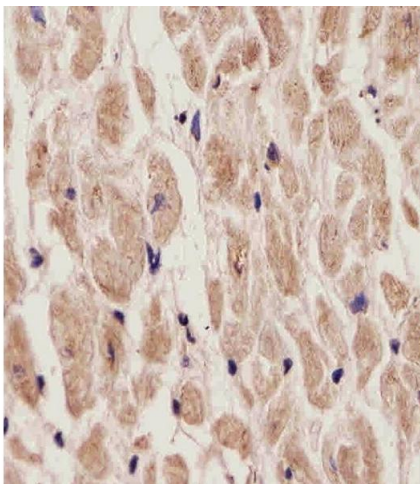
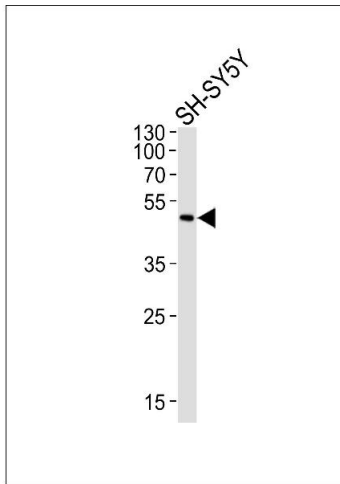
Format:	Liquid
Buffer:	Purified polyclonal antibody supplied in PBS with 0.09 % (W/V) sodium azide.
Preservative:	Sodium azide
Precaution of Use:	This product contains Sodium azide: a POISONOUS AND HAZARDOUS SUBSTANCE which should be handled by trained staff only.
Storage:	4 °C,-20 °C
Expiry Date:	6 months

Images



Flow Cytometry

Image 1. Overlay histogram showing SH-SY5Y cells stained with (ABIN6242180 and ABIN6577907) (green line). The cells were fixed with 4 % paraformaldehyde (10 min) and then permeabilized with 90 % methanol for 10 min. The cells were then incubated in 2 % bovine serum albumin to block non-specific protein-protein interactions followed by the antibody ((ABIN6242180 and ABIN6577907), 1:25 dilution) for 60 min at 37 °C. The secondary antibody used was Alexa Fluor® 488 goat anti-rabbit IgG (H+L) (1583138) at 1/400 dilution for 40 min at 37 °C. Isotype control antibody (blue line) was rabbit IgG1 (1 µg/1x10⁶ cells) used under the



same conditions. Acquisition of >10, 000 events was performed.

Western Blotting

Image 2. Western blot analysis of lysate from SH-SY5Y cell line, using ADORA2A Antibody (C-term) (ABIN6242180 and ABIN6577907). (ABIN6242180 and ABIN6577907) was diluted at 1:1000. A goat anti-rabbit IgG H&L(HRP) at 1:10000 dilution was used as the secondary antibody. Lysate at 20 µg.

Immunohistochemistry (Paraffin-embedded Sections)

Image 3. (ABIN6242180 and ABIN6577907) staining ADORA2A in Human heart tissue sections by Immunohistochemistry (IHC-P - paraformaldehyde-fixed, paraffin-embedded sections). Tissue was fixed with formaldehyde and blocked with 3 % BSA for 0.5 hour at room temperature, antigen retrieval was by heat mediation with a citrate buffer (pH 6). Samples were incubated with primary antibody (1/25) for 1 hours at 37 °C. A undiluted biotinylated goat polyvalent antibody was used as the secondary antibody.