

Datasheet for ABIN6242186

**anti-Amphiphysin antibody (C-Term)**[Go to Product page](#)**1** Image

## Overview

Quantity:	400 µL
Target:	Amphiphysin (AMPH)
Binding Specificity:	AA 580-614, C-Term
Reactivity:	Human
Host:	Rabbit
Clonality:	Polyclonal
Conjugate:	This Amphiphysin antibody is un-conjugated
Application:	Western Blotting (WB)

## Product Details

Immunogen:	This AMPH antibody is generated from a rabbit immunized with a KLH conjugated synthetic peptide between 580-614 amino acids from the C-terminal region of human AMPH.
Clone:	RB51674
Isotype:	Ig Fraction
Purification:	This antibody is purified through a protein A column, followed by peptide affinity purification.

## Target Details

Target:	Amphiphysin (AMPH)
Alternative Name:	AMPH ( <a href="#">AMPH Products</a> )
Background:	May participate in mechanisms of regulated exocytosis in synapses and certain endocrine cell

## Target Details

types. May control the properties of the membrane associated cytoskeleton.

Molecular Weight: 76257

UniProt: [P49418](#)

## Application Details

Application Notes: WB: 1:1000

Restrictions: For Research Use only

## Handling

Format: Liquid

Buffer: Purified polyclonal antibody supplied in PBS with 0.09 % (W/V) sodium azide.

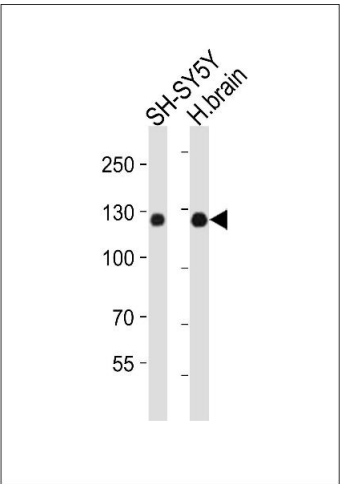
Preservative: Sodium azide

Precaution of Use: This product contains Sodium azide: a POISONOUS AND HAZARDOUS SUBSTANCE which should be handled by trained staff only.

Storage: 4 °C,-20 °C

Expiry Date: 6 months

## Images



### Western Blotting

**Image 1.** Western blot analysis of lysates from SH-SY5Y cell line, human brain tissue lysate(from left to right), using PH Antibody (C-term) (ABIN6242186 and ABIN6577884). (ABIN6242186 and ABIN6577884) was diluted at 1:1000 at each lane. A goat anti-rabbit IgG H&L(HRP) at 1:10000 dilution was used as the secondary antibody. Lysates at 20 µg per lane.