

Datasheet for ABIN6242188
anti-ANAPC2 antibody (C-Term)

3 Images

[Go to Product page](#)

Overview

| | |
|----------------------|---|
| Quantity: | 400 µL |
| Target: | ANAPC2 |
| Binding Specificity: | AA 712-746, C-Term |
| Reactivity: | Human |
| Host: | Rabbit |
| Clonality: | Polyclonal |
| Conjugate: | This ANAPC2 antibody is un-conjugated |
| Application: | Western Blotting (WB), Immunofluorescence (IF), Immunohistochemistry (Paraffin-embedded Sections) (IHC (p)) |

Product Details

| | |
|-----------------------|---|
| Immunogen: | This ANAPC2 antibody is generated from a rabbit immunized with a KLH conjugated synthetic peptide between 712-746 amino acids from the C-terminal region of human ANAPC2. |
| Clone: | RB51676 |
| Isotype: | Ig Fraction |
| Predicted Reactivity: | M |
| Purification: | This antibody is purified through a protein A column, followed by peptide affinity purification. |

Target Details

| | |
|---------|--------|
| Target: | ANAPC2 |
|---------|--------|

Target Details

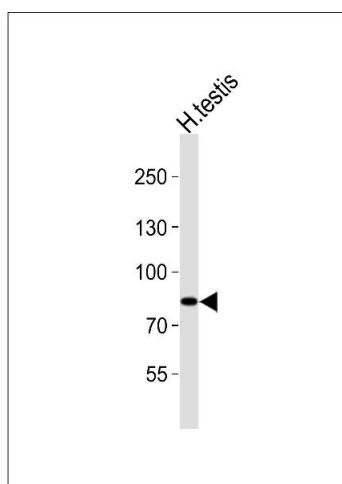
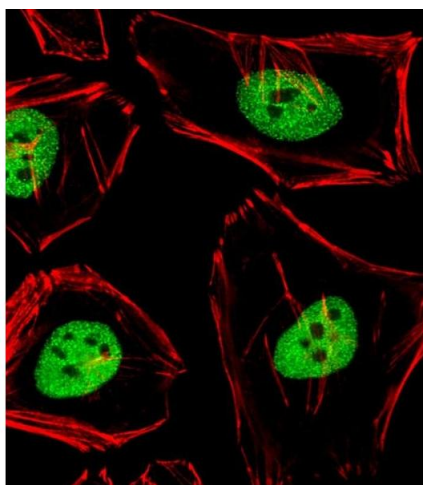
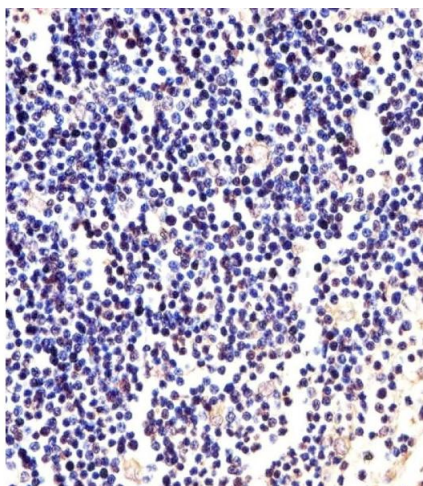
| | |
|-------------------|---|
| Alternative Name: | ANAPC2 (ANAPC2 Products) |
| Background: | <p>Component of the anaphase promoting complex/cyclosome (APC/C), a cell cycle-regulated E3 ubiquitin ligase that controls progression through mitosis and the G1 phase of the cell cycle.</p> <p>The APC/C complex acts by mediating ubiquitination and subsequent degradation of target proteins: it mainly mediates the formation of 'Lys-11'-linked polyubiquitin chains and, to a lower extent, the formation of 'Lys-48'- and 'Lys-63'-linked polyubiquitin chains. The CDC20-APC/C complex positively regulates the formation of synaptic vesicle clustering at active zone to the presynaptic membrane in postmitotic neurons. CDC20-APC/C-induced degradation of NEUROD2 drives presynaptic differentiation.</p> |
| Molecular Weight: | 93828 |
| UniProt: | Q9UJX6 |
| Pathways: | Regulation of Cell Size |

Application Details

| | |
|--------------------|-----------------------------------|
| Application Notes: | IF: 1:25. WB: 1:1000. IHC-P: 1:25 |
| Restrictions: | For Research Use only |

Handling

| | |
|--------------------|--|
| Format: | Liquid |
| Buffer: | Purified polyclonal antibody supplied in PBS with 0.09 % (W/V) sodium azide. |
| Preservative: | Sodium azide |
| Precaution of Use: | This product contains Sodium azide: a POISONOUS AND HAZARDOUS SUBSTANCE which should be handled by trained staff only. |
| Storage: | 4 °C,-20 °C |
| Expiry Date: | 6 months |



Immunohistochemistry (Paraffin-embedded Sections)

Image 1. Immunohistochemical analysis of paraffin-embedded H. thymus section using ANC2 Antibody (C-term) 21055a. 21055a was diluted at 1:25 dilution. A undiluted biotinylated goat polyvalent antibody was used as the secondary, followed by DAB staining.

Immunofluorescence

Image 2. Immunofluorescent analysis of 4% paraformaldehyde-fixed, 0.1% Triton X-100 permeabilized HeLa (Human Cervical epithelial adenocarcinoma cell line) cells labeling ANC2 with 21055a at 1/25 dilution, followed by Alexa Fluor 488-conjugated goat anti-rabbit IgG (1583138) secondary antibody at 1/400 dilution (green). Confocal image showing nuclear staining on HeLa cell line. Cytoplasmic actin is detected with Alexa Fluor® 555 conjugated with Phalloidin (OB16636430) at 1/100 dilution (red).

Western Blotting

Image 3. Western blot analysis of lysate from human testis tissue lysate, using ANC2 Antibody (C-term) 21055a. 21055a was diluted at 1:1000. A goat anti-rabbit IgG H&L(HRP) at 1:10000 dilution was used as the secondary antibody. Lysate at 20 µg.