

Datasheet for ABIN6242210  
**anti-Klotho beta antibody (AA 1-29)**[Go to Product page](#)

## 1 Image

## Overview

Quantity:	200 µL
Target:	Klotho beta (KLB)
Binding Specificity:	AA 1-29
Reactivity:	Human
Host:	Rabbit
Clonality:	Polyclonal
Conjugate:	This Klotho beta antibody is un-conjugated
Application:	Western Blotting (WB)

## Product Details

Immunogen:	This KLB antibody is generated from a rabbit immunized with a KLH conjugated synthetic peptide between 1-29 amino acids from human KLB.
Clone:	RB55007
Isotype:	Ig Fraction
Purification:	This antibody is purified through a protein A column, followed by peptide affinity purification.

## Target Details

Target:	Klotho beta (KLB)
Alternative Name:	KLB ( <a href="#">KLB Products</a> )
Background:	Contributes to the transcriptional repression of cholesterol 7-alpha-hydroxylase (CYP7A1), the

## Target Details

	rate-limiting enzyme in bile acid synthesis. Probably inactive as a glycosidase. Increases the ability of FGFR1 and FGFR4 to bind FGF21 (By similarity).
Molecular Weight:	119808
UniProt:	<a href="#">Q86Z14</a>
Pathways:	<a href="#">Fc-epsilon Receptor Signaling Pathway</a> , <a href="#">EGFR Signaling Pathway</a> , <a href="#">Neurotrophin Signaling Pathway</a> , <a href="#">Growth Factor Binding</a>

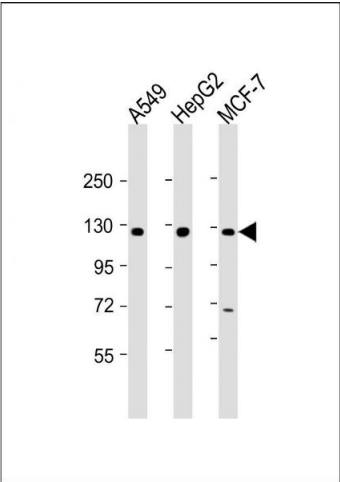
## Application Details

Application Notes:	WB: 1:2000
Restrictions:	For Research Use only

## Handling

Format:	Liquid
Buffer:	Purified polyclonal antibody supplied in PBS with 0.09 % (W/V) sodium azide.
Preservative:	Sodium azide
Precaution of Use:	This product contains Sodium azide: a POISONOUS AND HAZARDOUS SUBSTANCE which should be handled by trained staff only.
Storage:	4 °C,-20 °C
Expiry Date:	6 months

## Images



### Western Blotting

**Image 1.** All lanes : Anti-KLB Antibody (N-Term) at 1:2000 dilution Lane 1: A549 whole cell lysate Lane 2: HepG2 whole cell lysate Lane 3: MCF-7 whole cell lysate Lysates/proteins at 20 µg per lane. Secondary Goat Anti-Rabbit IgG, (H+L), Peroxidase conjugated at 1/10000 dilution. Predicted band size : 120 kDa Blocking/Dilution buffer: 5 % NFDM/TBST.