

Datasheet for ABIN6242215
anti-Cathepsin D antibody (AA 1-412)[Go to Product page](#)

4 Images

Overview

Quantity:	400 µL
Target:	Cathepsin D (CTSD)
Binding Specificity:	AA 1-412
Reactivity:	Human
Host:	Rabbit
Clonality:	Polyclonal
Conjugate:	This Cathepsin D antibody is un-conjugated
Application:	Western Blotting (WB), Immunohistochemistry (Paraffin-embedded Sections) (IHC (p)), Immunofluorescence (IF)

Product Details

Immunogen:	This antibody is generated from a rabbit immunized with a KLH conjugated synthetic peptide between amino acids from human.
Clone:	RB44366
Isotype:	Ig Fraction
Purification:	This antibody is purified through a protein A column, followed by peptide affinity purification.

Target Details

Target:	Cathepsin D (CTSD)
Alternative Name:	CTSD (CTSD Products)

Target Details

Background:	Acid protease active in intracellular protein breakdown. Involved in the pathogenesis of several diseases such as breast cancer and possibly Alzheimer disease.
Molecular Weight:	44552
UniProt:	P07339
Pathways:	Peptide Hormone Metabolism

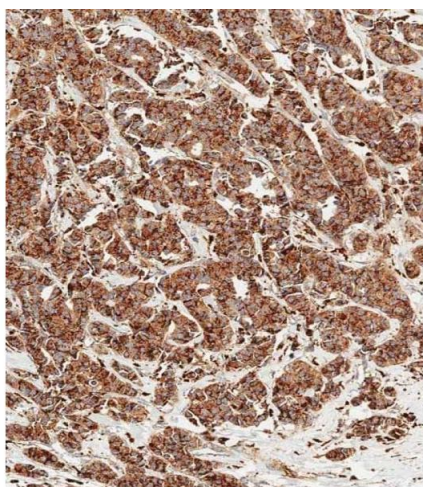
Application Details

Application Notes:	IF: 1:25. WB: 1:1000. IHC-P-Leica: 1:1000. IHC-P-Leica: 1:1000
Restrictions:	For Research Use only

Handling

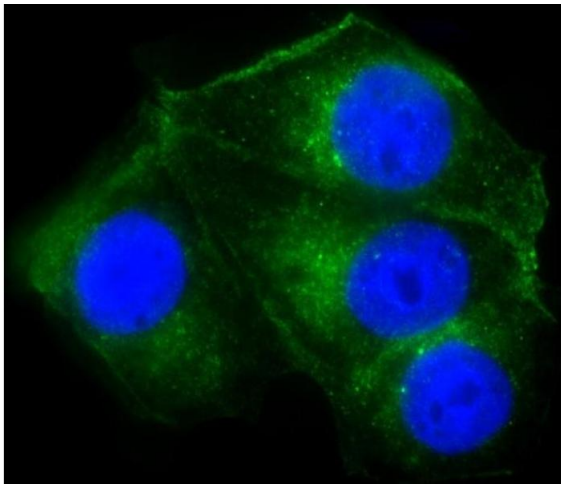
Format:	Liquid
Buffer:	Purified polyclonal antibody supplied in PBS with 0.09 % (W/V) sodium azide.
Preservative:	Sodium azide
Precaution of Use:	This product contains Sodium azide: a POISONOUS AND HAZARDOUS SUBSTANCE which should be handled by trained staff only.
Storage:	4 °C, -20 °C
Expiry Date:	6 months

Images



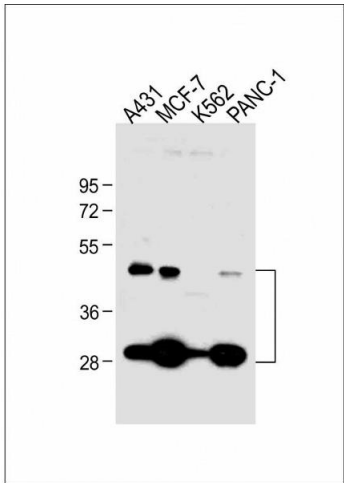
Immunohistochemistry (Paraffin-embedded Sections)

Image 1. Immunohistochemical analysis of paraffin-embedded human breast carcinoma tissue using (ABIN6242215 and ABIN6577457) performed on the Leica® BOND RXm. Tissue was fixed with formaldehyde at room temperature, antigen retrieval was by heat mediation with a EDTA buffer (pH 9.0). Samples were incubated with primary Antibody (1:1000) for 1 hours at room temperature. A undiluted biotinylated CRF Anti-Polyvalent HRP Polymer antibody was used as the secondary antibody.



Immunofluorescence

Image 2. Immunofluorescent analysis of 4 % paraformaldehyde-fixed, 0.1 % Triton X-100 permeabilized MCF-7 cells labeling CTSD with (ABIN6242215 and ABIN6577457) at 1/25 dilution, followed by Dylight® 488-conjugated goat anti-Rabbit IgG (OH191631) secondary antibody at 1/200 dilution (green). Immunofluorescence image showing cytoplasm staining on MCF-7 cell line. Cytoplasmic actin is detected with Dylight® 554 Phalloidin (1186255) at 1/500 dilution (red). The nuclear counter stain is DI (blue).



Western Blotting

Image 3. All lanes : Anti-CTSD Antibody at 1:1000 dilution
Lane 1: A431 whole cell lysate Lane 2: MCF-7 whole cell lysate Lane 3: K562 whole cell lysate Lane 4: NC-1 whole cell lysate Lysates/proteins at 20 µg per lane. Secondary Goat Anti-Rabbit IgG, (H+L), Peroxidase conjugated at 1/10000 dilution. Predicted band size : 45 kDa Blocking/Dilution buffer: 5 % NFDM/TBST.

Please check the [product details page](#) for more images. Overall 4 images are available for ABIN6242215.