

Datasheet for ABIN6242216
anti-CBX8 antibody (C-Term)[Go to Product page](#)

2 Images

Overview

Quantity:	400 µL
Target:	CBX8
Binding Specificity:	AA 1-278, C-Term
Reactivity:	Human
Host:	Mouse
Clonality:	Monoclonal
Conjugate:	This CBX8 antibody is un-conjugated
Application:	Western Blotting (WB), Flow Cytometry (FACS)

Product Details

Immunogen:	This CBX8 antibody is generated from a mouse immunized with a KLH conjugated synthetic peptide between amino acids from the C-terminal region of human CBX8.
Clone:	1214CT171-154-107
Isotype:	IgG1
Purification:	This antibody is purified through a protein G column, followed by dialysis against PBS.

Target Details

Target:	CBX8
Alternative Name:	CBX8 (CBX8 Products)
Background:	Component of a Polycomb group (PcG) multiprotein PRC1- like complex, a complex class

Target Details

required to maintain the transcriptionally repressive state of many genes, including Hox genes, throughout development. PcG PRC1 complex acts via chromatin remodeling and modification of histones, it mediates monoubiquitination of histone H2A 'Lys-119', rendering chromatin heritably changed in its expressibility.

Molecular Weight: 43396

UniProt: [Q9HC52](#)

Application Details

Application Notes: WB: 1:1000. FC: 1:25

Restrictions: For Research Use only

Handling

Format: Liquid

Buffer: Purified monoclonal antibody supplied in PBS with 0.09 % (W/V) sodium azide.

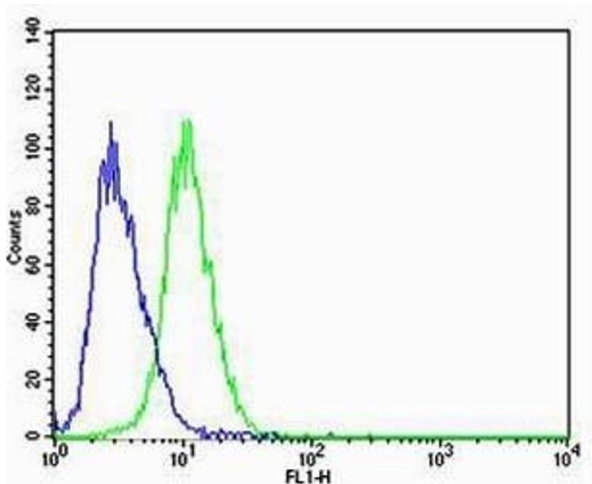
Preservative: Sodium azide

Precaution of Use: This product contains Sodium azide: a POISONOUS AND HAZARDOUS SUBSTANCE which should be handled by trained staff only.

Storage: 4 °C,-20 °C

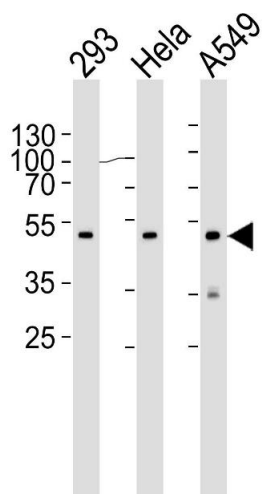
Expiry Date: 6 months

Images



Flow Cytometry

Image 1. Flow cytometric analysis of A549 cells using CBX8 Antibody (C-term)(green, Cat(ABIN6242216 and ABIN6577075)) compared to an isotype control of mouse IgG1(blue). (ABIN1944740 and ABIN2838564) was diluted at 1:25 dilution. An Alexa Fluor® 488 goat anti-mouse IgG at 1:400 dilution was used as the secondary antibody.



Western Blotting

Image 2. Western blot analysis of lysates from 293, HeLa, A549 cell line (from left to right), using CBX8 Antibody (C-term) (ABIN6242216 and ABIN6577075). (ABIN6242216 and ABIN6577075) was diluted at 1:1000 at each lane. A goat anti-mouse IgG H&L(HRP) at 1:3000 dilution was used as the secondary antibody. Lysates at 35 µg per lane.