

Datasheet for ABIN6242236
anti-TUBB2A antibody (AA 194-225)[Go to Product page](#)

3 Images

Overview

Quantity:	200 µL
Target:	TUBB2A
Binding Specificity:	AA 194-225
Reactivity:	Human, Mouse, Rat
Host:	Rabbit
Clonality:	Polyclonal
Conjugate:	This TUBB2A antibody is un-conjugated
Application:	Western Blotting (WB), Immunofluorescence (IF), Flow Cytometry (FACS)

Product Details

Immunogen:	This beta II Tubulin antibody is generated from a rabbit immunized with a KLH conjugated synthetic peptide between 194-225 amino acids from the mouse region of mouse beta II Tubulin.
Clone:	RB57744
Isotype:	Ig Fraction
Predicted Reactivity:	Pr
Purification:	This antibody is purified through a protein A column, followed by peptide affinity purification.

Target Details

Target:	TUBB2A
---------	--------

Target Details

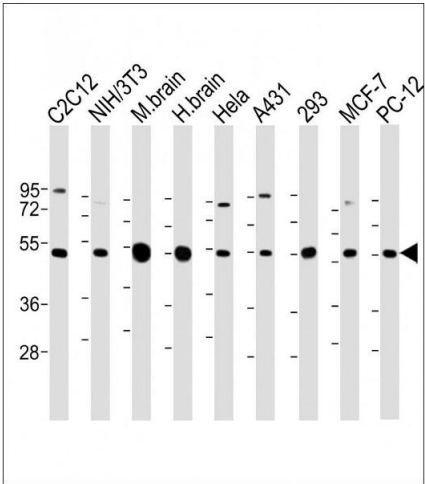
Alternative Name:	beta II Tubulin (TUBB2A Products)
Background:	Tubulin is the major constituent of microtubules. It binds two moles of GTP, one at an exchangeable site on the beta chain and one at a non-exchangeable site on the alpha chain (By similarity).
Molecular Weight:	49907
UniProt:	Q7TMM9
Pathways:	Microtubule Dynamics, M Phase

Application Details

Application Notes:	IF: 1:25. WB: 1:2000. FC: 1:25
Restrictions:	For Research Use only

Handling

Format:	Liquid
Buffer:	Purified polyclonal antibody supplied in PBS with 0.09 % (W/V) sodium azide.
Preservative:	Sodium azide
Precaution of Use:	This product contains Sodium azide: a POISONOUS AND HAZARDOUS SUBSTANCE which should be handled by trained staff only.
Storage:	4 °C, -20 °C
Expiry Date:	6 months



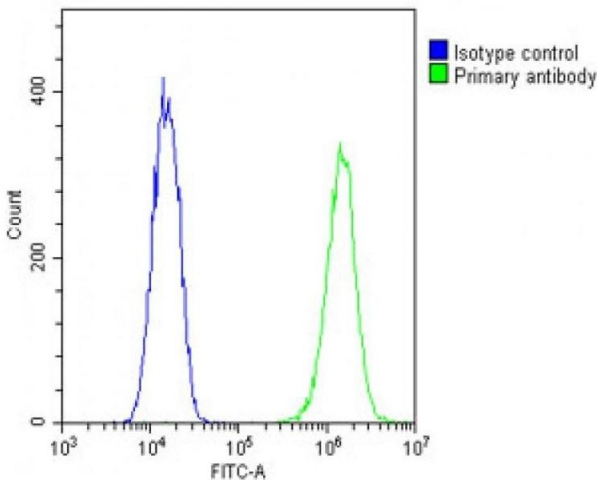
Western Blotting

Image 1. All lanes : Anti-beta II Tubulin Antibody at 1:2000 dilution Lane 1: C2C12 whole cell lysate Lane 2: NIH/3T3 whole cell lysate Lane 3: Mouse brain lysate Lane 4: Human brain lysate Lane 5: Hela whole cell lysate Lane 6: A431 whole cell lysate Lane 7: 293 whole cell lysate Lane 8: MCF-7 whole cell lysate Lane 9: PC-12 whole cell lysate Lysates/proteins at 20 µg per lane. Secondary Goat Anti-Rabbit IgG, (H+L), Peroxidase conjugated at 1/10000 dilution. Predicted band size : 50 kDa Blocking/Dilution buffer: 5 % NFDM/TBST.



Immunofluorescence

Image 2. Immunofluorescent analysis of 4 % paraformaldehyde-fixed, 0.1 % Triton X-100 permeabilized C2C12 (mouse myoblast cell line) cells labeling beta II Tubulin with (ABIN6242236 and ABIN6578878) at 1/25 dilution, followed by Dylight® 488-conjugated goat anti-rabbit IgG (1583138) secondary antibody at 1/200 dilution (green). Immunofluorescence image showing cytoskeleton staining on C2C12 cell line. Cytoplasmic actin is detected with Dylight® 554 Phalloidin (OI17558410) at 1/100 dilution (red). The nuclear counter stain is DI (blue).



Flow Cytometry

Image 3. Overlay histogram showing C2C12 cells stained with (ABIN6242236 and ABIN6578878)(green line). The cells were fixed with 2 % paraformaldehyde and then permeabilized with 90 % methanol for 10 min. The cells were then incubated in 2 % bovine serum albumin to block non-specific protein-protein interactions followed by the antibody (1:25 dilution) for 60 min at 37 °C. The secondary antibody used was Goat-Anti-Rabbit IgG, DyLight® 488 Conjugated Highly Cross-Adsorbed at 1/200 dilution for 40 min at Room temperature. Isotype control antibody (blue

line) was rabbit IgG1 (1 µg/1x10⁶ cells) used under the same conditions. Acquisition of >10, 000 events was performed.