

Datasheet for ABIN6242237
anti-CD56 antibody (C-Term)

3 Images

[Go to Product page](#)

Overview

Quantity:	400 µL
Target:	CD56 (NCAM1)
Binding Specificity:	AA 829-863, C-Term
Reactivity:	Human
Host:	Rabbit
Clonality:	Polyclonal
Conjugate:	This CD56 antibody is un-conjugated
Application:	Flow Cytometry (FACS), Western Blotting (WB)

Product Details

Immunogen:	This NCAM1 antibody is generated from a rabbit immunized with a KLH conjugated synthetic peptide between 829-863 amino acids from the C-terminal region of human NCAM1.
Clone:	RB51136
Isotype:	Ig Fraction
Purification:	This antibody is purified through a protein A column, followed by peptide affinity purification.

Target Details

Target:	CD56 (NCAM1)
Alternative Name:	NCAM1 (NCAM1 Products)
Background:	This protein is a cell adhesion molecule involved in neuron-neuron adhesion, neurite

Target Details

fasciculation, outgrowth of neurites, etc.

Molecular Weight: 94574

UniProt: [P13591](#)

Application Details

Application Notes: WB: 1:1000. WB: 1:1000. FC: 1:25

Restrictions: For Research Use only

Handling

Format: Liquid

Buffer: Purified polyclonal antibody supplied in PBS with 0.09 % (W/V) sodium azide.

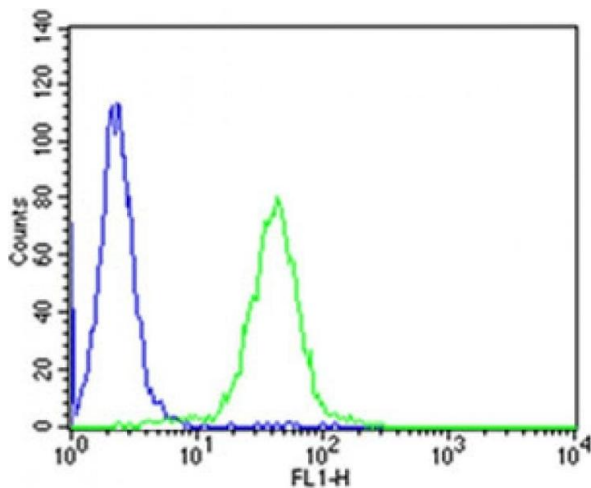
Preservative: Sodium azide

Precaution of Use: This product contains Sodium azide: a POISONOUS AND HAZARDOUS SUBSTANCE which should be handled by trained staff only.

Storage: 4 °C,-20 °C

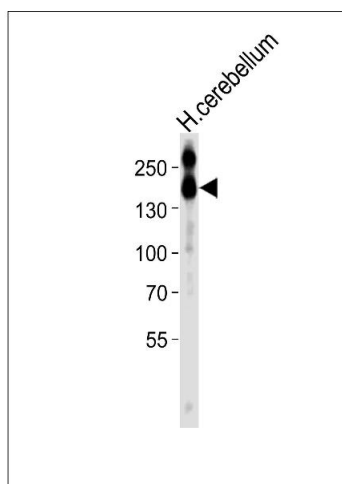
Expiry Date: 6 months

Images



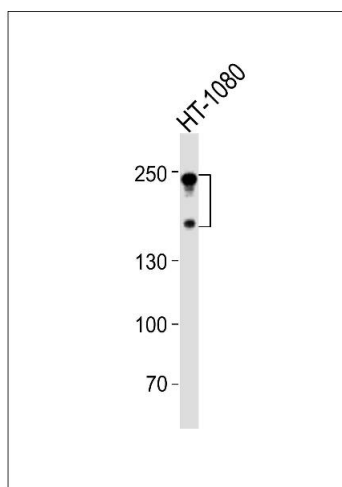
Flow Cytometry

Image 1. Flow cytometric analysis of SH-SY5Y cells using NC Antibody (C-term)(green, Cat(ABIN6242237 and ABIN6577689)) compared to an isotype control of rabbit IgG(blue). (ABIN6242237 and ABIN6577689) was diluted at 1:25 dilution. An Alexa Fluor® 488 goat anti-rabbit IgG at 1:400 dilution was used as the secondary antibody.



Western Blotting

Image 2. Western blot analysis of lysate from HT-1080 cell line, using NC Antibody (C-term) (ABIN6242237 and ABIN6577689). (ABIN6242237 and ABIN6577689) was diluted at 1:1000. A goat anti-rabbit IgG H&L(HRP) at 1:10000 dilution was used as the secondary antibody. Lysate at 20 µg.



Western Blotting

Image 3. Western blot analysis of lysate from HT-1080 cell line, using NC Antibody (C-term) (ABIN6242237 and ABIN6577689). (ABIN6242237 and ABIN6577689) was diluted at 1:1000. A goat anti-rabbit IgG H&L(HRP) at 1:10000 dilution was used as the secondary antibody. Lysate at 20 µg.