

Datasheet for ABIN6242242
anti-NAT16 antibody (AA 12-46)[Go to Product page](#)

1 Image

Overview

Quantity:	200 µL
Target:	NAT16
Binding Specificity:	AA 12-46
Reactivity:	Human
Host:	Rabbit
Clonality:	Polyclonal
Conjugate:	This NAT16 antibody is un-conjugated
Application:	Western Blotting (WB)

Product Details

Immunogen:	This NAT16 antibody is generated from a rabbit immunized with a KLH conjugated synthetic peptide between 12-46 amino acids from human NAT16.
Clone:	RB54654
Isotype:	Ig Fraction
Purification:	This antibody is purified through a protein A column, followed by peptide affinity purification.

Target Details

Target:	NAT16
Alternative Name:	NAT16 (NAT16 Products)
Molecular Weight:	40521

Target Details

UniProt: [Q8N8M0](#)

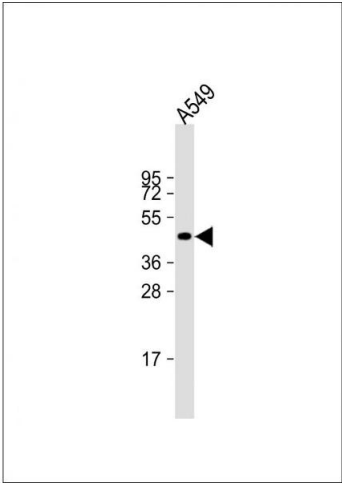
Application Details

Application Notes:	WB: 1:2000
Restrictions:	For Research Use only

Handling

Format:	Liquid
Buffer:	Purified polyclonal antibody supplied in PBS with 0.09 % (W/V) sodium azide.
Preservative:	Sodium azide
Precaution of Use:	This product contains Sodium azide: a POISONOUS AND HAZARDOUS SUBSTANCE which should be handled by trained staff only.
Storage:	4 °C,-20 °C
Expiry Date:	6 months

Images



Western Blotting

Image 1. Anti-NAT16 Antibody (N-Term) at 1:2000 dilution + A549 whole cell lysate Lysates/proteins at 20 µg per lane. Secondary Goat Anti-Rabbit IgG, (H+L), Peroxidase conjugated at 1/10000 dilution. Predicted band size : 41 kDa Blocking/Dilution buffer: 5 % NFDM/TBST.