

Datasheet for ABIN6242244  
**anti-CHRM3 antibody (AA 233-264)**[Go to Product page](#)

## 1 Image

## Overview

Quantity:	200 µL
Target:	CHRM3
Binding Specificity:	AA 233-264
Reactivity:	Human
Host:	Rabbit
Clonality:	Polyclonal
Conjugate:	This CHRM3 antibody is un-conjugated
Application:	Western Blotting (WB)

## Product Details

Immunogen:	This CHRM3 antibody is generated from a rabbit immunized with a KLH conjugated synthetic peptide between 233-264 amino acids from the Central region of human CHRM3.
Clone:	RB55294
Isotype:	Ig Fraction
Predicted Reactivity:	B, C, M, Pig, Rat
Purification:	This antibody is purified through a protein A column, followed by peptide affinity purification.

## Target Details

Target:	CHRM3
Alternative Name:	CHRM3 ( <a href="#">CHRM3 Products</a> )

## Target Details

Background:	The muscarinic acetylcholine receptor mediates various cellular responses, including inhibition of adenylate cyclase, breakdown of phosphoinositides and modulation of potassium channels through the action of G proteins. Primary transducing effect is Pi turnover.
Molecular Weight:	66128
UniProt:	<a href="#">P20309</a>
Pathways:	<a href="#">Synaptic Membrane</a>

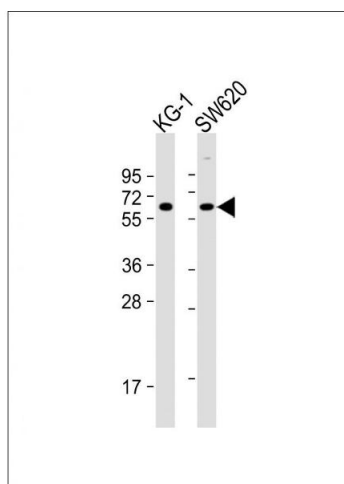
## Application Details

Application Notes:	WB: 1:16000
Restrictions:	For Research Use only

## Handling

Format:	Liquid
Buffer:	Purified polyclonal antibody supplied in PBS with 0.09 % (W/V) sodium azide.
Preservative:	Sodium azide
Precaution of Use:	This product contains Sodium azide: a POISONOUS AND HAZARDOUS SUBSTANCE which should be handled by trained staff only.
Storage:	4 °C,-20 °C
Expiry Date:	6 months

## Images



### Western Blotting

**Image 1.** All lanes : Anti-CHRM3 Antibody (Center) at 1:16000 dilution Lane 1: KG-1 whole cell lysate Lane 2: S whole cell lysate Lysates/proteins at 20 µg per lane. Secondary Goat Anti-Rabbit IgG, (H+L), Peroxidase conjugated at 1/10000 dilution. Predicted band size : 66 kDa Blocking/Dilution buffer: 5 % NFDM/TBST.