

Datasheet for ABIN6242245
anti-CLIC2 antibody (AA 105-137)[Go to Product page](#)

1 Image

Overview

Quantity:	200 µL
Target:	CLIC2
Binding Specificity:	AA 105-137
Reactivity:	Human
Host:	Rabbit
Clonality:	Polyclonal
Conjugate:	This CLIC2 antibody is un-conjugated
Application:	Western Blotting (WB)

Product Details

Immunogen:	This CLIC2 antibody is generated from a rabbit immunized with a KLH conjugated synthetic peptide between 105-137 amino acids from the Central region of human CLIC2.
Clone:	RB54003
Isotype:	Ig Fraction
Predicted Reactivity:	Rat
Purification:	This antibody is purified through a protein A column, followed by peptide affinity purification.

Target Details

Target:	CLIC2
Alternative Name:	CLIC2 (CLIC2 Products)

Target Details

Background:	Can insert into membranes and form chloride ion channels. Channel activity depends on the pH . Membrane insertion seems to be redox-regulated and may occur only under oxydizing conditions. Modulates the activity of RYR2 and inhibits calcium influx.
Molecular Weight:	28356
UniProt:	O15247
Pathways:	Negative Regulation of Transporter Activity

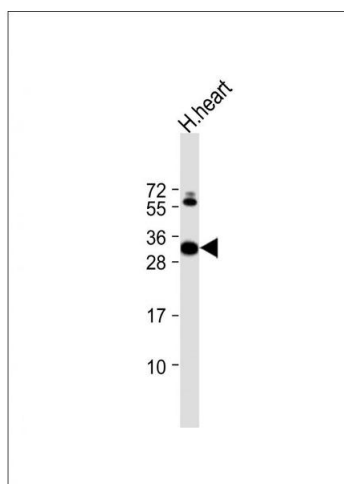
Application Details

Application Notes:	WB: 1:2000
Restrictions:	For Research Use only

Handling

Format:	Liquid
Buffer:	Purified polyclonal antibody supplied in PBS with 0.09 % (W/V) sodium azide.
Preservative:	Sodium azide
Precaution of Use:	This product contains Sodium azide: a POISONOUS AND HAZARDOUS SUBSTANCE which should be handled by trained staff only.
Storage:	4 °C,-20 °C
Expiry Date:	6 months

Images



Western Blotting

Image 1. Anti-CLIC2 Antibody (Center) at 1:2000 dilution + human heart lysate Lysates/proteins at 20 µg per lane. Secondary Goat Anti-Rabbit IgG, (H+L), Peroxidase conjugated at 1/10000 dilution. Predicted band size : 28 kDa Blocking/Dilution buffer: 5 % NFDM/TBST.