



[Go to Product page](#)

Datasheet for ABIN6242263  
**anti-Cardiotrophin 1 antibody**

2 Images

Overview

Quantity:	400 µL
Target:	Cardiotrophin 1 (CTF1)
Reactivity:	Rat, Mouse
Host:	Rabbit
Clonality:	Polyclonal
Conjugate:	This Cardiotrophin 1 antibody is un-conjugated
Application:	Western Blotting (WB)

Product Details

Immunogen:	This Mouse Ctf1 antibody is generated from a rabbit immunized with a recombinant protein.
Clone:	RB52510
Isotype:	Ig Fraction
Purification:	This antibody is purified through a protein A column, followed by peptide affinity purification.

Target Details

Target:	Cardiotrophin 1 (CTF1)
Alternative Name:	Ctf1 ( <a href="#">CTF1 Products</a> )
Background:	Induces cardiac myocyte hypertrophy in vitro. Binds to and activates the ILST/gp130 receptor.
Molecular Weight:	21509
UniProt:	<a href="#">Q60753</a>

## Target Details

Pathways: [JAK-STAT Signaling](#)

## Application Details

Application Notes: WB: 1:2000. WB: 1:2000

Restrictions: For Research Use only

## Handling

Format: Liquid

Buffer: Purified polyclonal antibody supplied in PBS with 0.09 % (W/V) sodium azide.

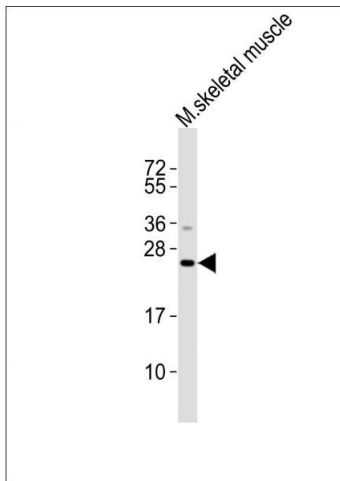
Preservative: Sodium azide

Precaution of Use: This product contains Sodium azide: a POISONOUS AND HAZARDOUS SUBSTANCE which should be handled by trained staff only.

Storage: 4 °C,-20 °C

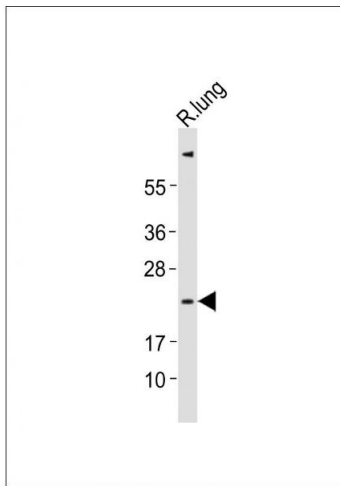
Expiry Date: 6 months

## Images



### Western Blotting

**Image 1.** All lanes : Anti-Ctf1 Antibody at 1:2000 dilution + mouse skeletal muscle lysates Lysates/proteins at 20 µg per lane. Secondary Goat Anti-Rabbit IgG, (H+L), Peroxidase conjugated at 1/10000 dilution Predicted band size : 22 kDa Blocking/Dilution buffer: 5 % NFDM/TBST.



### Western Blotting

**Image 2.** Anti-Ctf1 Antibody at 1:2000 dilution + rat lung lysates Lysates/proteins at 20  $\mu$ g per lane. Secondary Goat Anti-Rabbit IgG, (H+L), Peroxidase conjugated at 1/10000 dilution Predicted band size : 22 kDa Blocking/Dilution buffer: 5 % NFDM/TBST.