



Datasheet for ABIN6242265
anti-HLC8 antibody (AA 264-696)



[Go to Product page](#)

1 Image

Overview

| | |
|----------------------|-------------------------------------|
| Quantity: | 400 µL |
| Target: | HLC8 (C17orf80) |
| Binding Specificity: | AA 264-696 |
| Reactivity: | Human |
| Host: | Rabbit |
| Clonality: | Polyclonal |
| Conjugate: | This HLC8 antibody is un-conjugated |
| Application: | Western Blotting (WB) |

Product Details

| | |
|---------------|----------------------------------------------------------------------------------------------------------------------------------------------------------------------------|
| Immunogen: | This C17orf80 antibody is generated from a rabbit immunized with a KLH conjugated synthetic peptide between 264-696 amino acids from the Central region of human C17orf80. |
| Clone: | RB53765 |
| Isotype: | Ig Fraction |
| Purification: | This antibody is purified through a protein A column, followed by peptide affinity purification. |

Target Details

| | |
|-------------------|------------------------------------------------|
| Target: | HLC8 (C17orf80) |
| Alternative Name: | C17orf80 (C17orf80 Products) |
| Molecular Weight: | 67315 |

Target Details

UniProt: [Q9BSJ5](#)

Application Details

Application Notes: WB: 1:1000-1:2000

Restrictions: For Research Use only

Handling

Format: Liquid

Buffer: Purified polyclonal antibody supplied in PBS with 0.09 % (W/V) sodium azide.

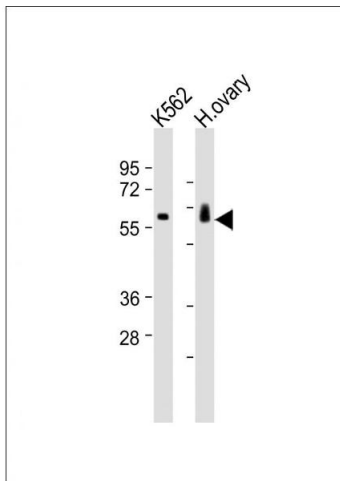
Preservative: Sodium azide

Precaution of Use: This product contains Sodium azide: a POISONOUS AND HAZARDOUS SUBSTANCE which should be handled by trained staff only.

Storage: 4 °C,-20 °C

Expiry Date: 6 months

Images



Western Blotting

Image 1. All lanes : Anti-C17orf80 Antibody (Center) at 1:1000-1:2000 dilution Lane 1: K562 whole cell lysates Lane 2: human ovary lysates Lysates/proteins at 20 µg per lane. Secondary Goat Anti-Rabbit IgG, (H+L), Peroxidase conjugated at 1/10000 dilution Predicted band size : 67 kDa Blocking/Dilution buffer: 5 % NFDm/TBST.