

Datasheet for ABIN6242267  
**anti-Claudin 6 antibody (C-Term)**[Go to Product page](#)

## 1 Image

## Overview

Quantity:	400 µL
Target:	Claudin 6 (CLDN6)
Binding Specificity:	AA 146-180, C-Term
Reactivity:	Mouse
Host:	Rabbit
Clonality:	Polyclonal
Conjugate:	This Claudin 6 antibody is un-conjugated
Application:	Western Blotting (WB)

## Product Details

Immunogen:	This mouse Cldn6 antibody is generated from a rabbit immunized with a KLH conjugated synthetic peptide between 146-180 amino acids from the C-terminal region of mouse Cldn6.
Clone:	RB51535
Isotype:	Ig Fraction
Purification:	This antibody is purified through a protein A column, followed by peptide affinity purification.

## Target Details

Target:	Claudin 6 (CLDN6)
Alternative Name:	Cldn6 ( <a href="#">CLDN6 Products</a> )
Background:	Plays a major role in tight junction-specific obliteration of the intercellular space, through

## Target Details

calcium- independent cell-adhesion activity (By similarity).

Molecular Weight: 23388

UniProt: [Q9Z262](#)

Pathways: [Hepatitis C](#)

## Application Details

Application Notes: WB: 1:1000

Restrictions: For Research Use only

## Handling

Format: Liquid

Buffer: Purified polyclonal antibody supplied in PBS with 0.09 % (W/V) sodium azide.

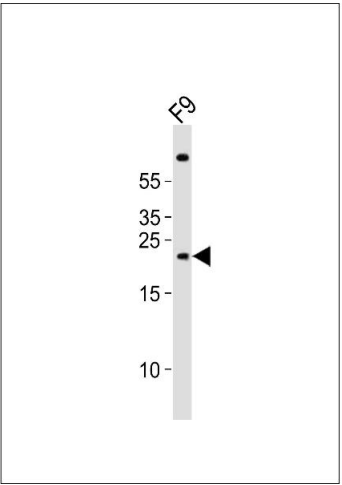
Preservative: Sodium azide

Precaution of Use: This product contains Sodium azide: a POISONOUS AND HAZARDOUS SUBSTANCE which should be handled by trained staff only.

Storage: 4 °C, -20 °C

Expiry Date: 6 months

## Images



### Western Blotting

**Image 1.** Western blot analysis of lysate from mouse F9 cell line, using (Mouse) Cldn6 Antibody (C-term) (ABIN6242267 and ABIN6577837). (ABIN6242267 and ABIN6577837) was diluted at 1:1000. A goat anti-rabbit IgG H&L(HRP) at 1:10000 dilution was used as the secondary antibody. Lysate at 20 µg.