

Datasheet for ABIN6242268  
**anti-Claudin 6 antibody (C-Term)**[Go to Product page](#)

## 2 Images

## Overview

Quantity:	400 µL
Target:	Claudin 6 (CLDN6)
Binding Specificity:	AA 186-229, C-Term
Reactivity:	Mouse
Host:	Rabbit
Clonality:	Polyclonal
Conjugate:	This Claudin 6 antibody is un-conjugated
Application:	Western Blotting (WB), Flow Cytometry (FACS)

## Product Details

Immunogen:	This Mouse Cldn6 antibody is generated from a rabbit immunized with a KLH conjugated synthetic peptide between 186-229 amino acids from the C-terminal region of mouse Cldn6.
Clone:	RB51201
Isotype:	Ig Fraction
Purification:	This antibody is purified through a protein A column, followed by peptide affinity purification.

## Target Details

Target:	Claudin 6 (CLDN6)
Alternative Name:	Cldn6 ( <a href="#">CLDN6 Products</a> )
Background:	Plays a major role in tight junction-specific obliteration of the intercellular space, through

## Target Details

calcium- independent cell-adhesion activity (By similarity).

Molecular Weight: 23388

UniProt: [Q9Z262](#)

Pathways: [Hepatitis C](#)

## Application Details

Application Notes: WB: 1:1000. FC: 1:25

Restrictions: For Research Use only

## Handling

Format: Liquid

Buffer: Purified polyclonal antibody supplied in PBS with 0.09 % (W/V) sodium azide.

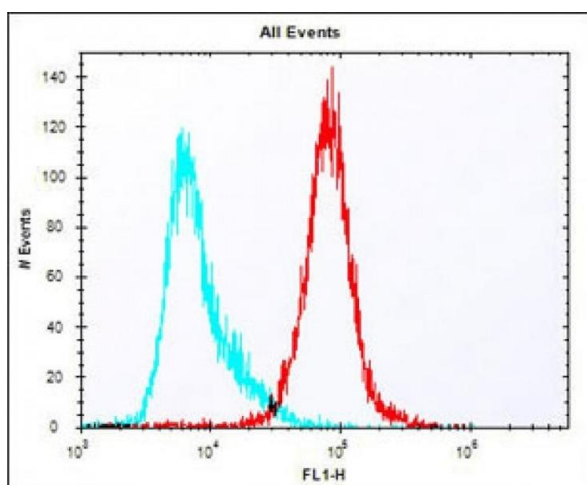
Preservative: Sodium azide

Precaution of Use: This product contains Sodium azide: a POISONOUS AND HAZARDOUS SUBSTANCE which should be handled by trained staff only.

Storage: 4 °C, -20 °C

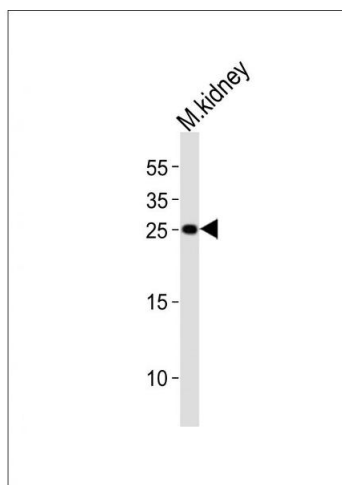
Expiry Date: 6 months

## Images



### Flow Cytometry

**Image 1.** Overlay histogram showing colon26 cells stained with (ABIN6242268 and ABIN6577912) (red line). The cells were fixed with 2 % paraformaldehyde (10 min) and then permeabilized with 90 % methanol for 10 min. The cells were then incubated in 2 % bovine serum albumin to block non-specific protein-protein interactions followed by the antibody ((ABIN6242268 and ABIN6577912), 1:25 dilution) for 60 min at 37 °C. The secondary antibody used was Alexa Fluor® 488 goat anti-rabbit IgG (H+L) (1583138) at 1/400 dilution for 40 min at 37 °C. Isotype control antibody (blue



line) was rabbit IgG1 (1  $\mu$ g/ $1 \times 10^6$  cells) used under the same conditions. Acquisition of >10,000 events was performed.

### Western Blotting

**Image 2.** Western blot analysis of lysate from mouse kidney tissue lysate, using Cldn6 Antibody (C-term) (ABIN6242268 and ABIN6577912). (ABIN6242268 and ABIN6577912) was diluted at 1:1000. A goat anti-rabbit IgG H&L(HRP) at 1:10000 dilution was used as the secondary antibody. Lysate at 20  $\mu$ g.