

Datasheet for ABIN6242272  
**anti-Cyclin D3 antibody (N-Term)**[Go to Product page](#)

## 2 Images

## Overview

Quantity:	400 µL
Target:	Cyclin D3 (CCND3)
Binding Specificity:	AA 33-66, N-Term
Reactivity:	Rat
Host:	Rabbit
Clonality:	Polyclonal
Conjugate:	This Cyclin D3 antibody is un-conjugated
Application:	Western Blotting (WB)

## Product Details

Immunogen:	This rat Ccnd3 antibody is generated from a rabbit immunized with a KLH conjugated synthetic peptide between 33-66 amino acids from the N-terminal region of rat Ccnd3.
Clone:	RB43404
Isotype:	Ig Fraction
Purification:	This antibody is purified through a protein A column, followed by peptide affinity purification.

## Target Details

Target:	Cyclin D3 (CCND3)
Alternative Name:	Ccnd3 ( <a href="#">CCND3 Products</a> )
Background:	Regulatory component of the cyclin D3-CDK4 (DC) complex that phosphorylates and inhibits

## Target Details

members of the retinoblastoma (RB) protein family including RB1 and regulates the cell-cycle during G(1)/S transition. Phosphorylation of RB1 allows dissociation of the transcription factor E2F from the RB/E2F complex and the subsequent transcription of E2F target genes which are responsible for the progression through the G(1) phase. Hypophosphorylates RB1 in early G(1) phase. Cyclin D-CDK4 complexes are major integrators of various mitogenic and antimitogenic signals. Also substrate for SMAD3, phosphorylating SMAD3 in a cell-cycle-dependent manner and repressing its transcriptional activity. Component of the ternary complex, cyclin D3/CDK4/CDKN1B, required for nuclear translocation and activity of the cyclin D-CDK4 complex.

Molecular Weight:	32434
-------------------	-------

UniProt:	<a href="#">P48961</a>
----------	------------------------

Pathways:	<a href="#">Cell Division Cycle</a> , <a href="#">Mitotic G1-G1/S Phases</a> , <a href="#">Glycosaminoglycan Metabolic Process</a>
-----------	--

## Application Details

Application Notes:	WB: 1:500-1:1000. WB: 1:500-1:1000
--------------------	------------------------------------

Restrictions:	For Research Use only
---------------	-----------------------

## Handling

Format:	Liquid
---------	--------

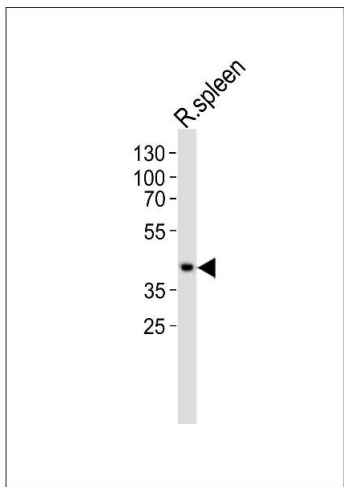
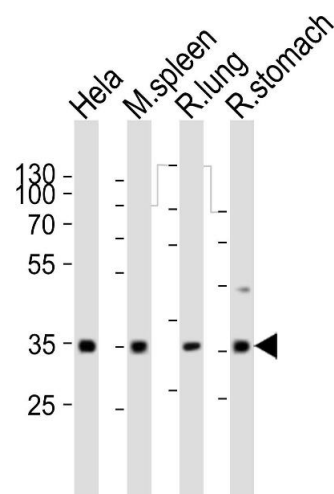
Buffer:	Purified polyclonal antibody supplied in PBS with 0.09 % (W/V) sodium azide.
---------	--

Preservative:	Sodium azide
---------------	--------------

Precaution of Use:	This product contains Sodium azide: a POISONOUS AND HAZARDOUS SUBSTANCE which should be handled by trained staff only.
--------------------	--

Storage:	4 °C,-20 °C
----------	-------------

Expiry Date:	6 months
--------------	----------



Western Blotting

**Image 1.** Western blot analysis of lysates from Hela cell line, mouse spleen, rat lung, rat stomach tissue (from left to right), using Ccnd3 Antibody (N-term) (ABIN6242272 and ABIN6577680). (ABIN6242272 and ABIN6577680) was diluted at 1:1000 at each lane. A goat anti-rabbit IgG H&L(HRP) at 1:10000 dilution was used as the secondary antibody. Lysates at 20 µg per lane.

Western Blotting

**Image 2.** Western blot analysis of lysate from rat spleen tissue, using Ccnd3 Antibody (N-term) (ABIN6242272 and ABIN6577680). (ABIN6242272 and ABIN6577680) was diluted at 1:1000. A goat anti-rabbit IgG H&L(HRP) at 1:10000 dilution was used as the secondary antibody. Lysate at 20 µg.