

Datasheet for ABIN6242288  
**anti-DNASE1 antibody (AA 87-121)**[Go to Product page](#)

## 2 Images

## Overview

Quantity:	400 µL
Target:	DNASE1
Binding Specificity:	AA 87-121
Reactivity:	Human, Mouse
Host:	Rabbit
Clonality:	Polyclonal
Conjugate:	This DNASE1 antibody is un-conjugated
Application:	Western Blotting (WB), Immunohistochemistry (Paraffin-embedded Sections) (IHC (p))

## Product Details

Immunogen:	This DNASE1 antibody is generated from a rabbit immunized with a KLH conjugated synthetic peptide between 87-121 amino acids from the Central region of human DNASE1.
Clone:	RB49355
Isotype:	Ig Fraction
Purification:	This antibody is purified through a protein A column, followed by peptide affinity purification.

## Target Details

Target:	DNASE1
Alternative Name:	DNASE1 ( <a href="#">DNASE1 Products</a> )
Background:	Among other functions, seems to be involved in cell death by apoptosis. Binds specifically to G-

## Target Details

actin and blocks actin polymerization (By similarity).

Molecular Weight: 31434

UniProt: [P24855](#)

## Application Details

Application Notes: WB: 1:1000. IHC-P-Leica: 1:500

Restrictions: For Research Use only

## Handling

Format: Liquid

Buffer: Purified polyclonal antibody supplied in PBS with 0.09 % (W/V) sodium azide.

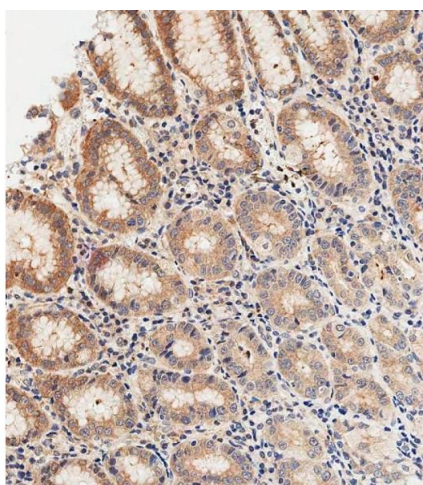
Preservative: Sodium azide

Precaution of Use: This product contains Sodium azide: a POISONOUS AND HAZARDOUS SUBSTANCE which should be handled by trained staff only.

Storage: 4 °C, -20 °C

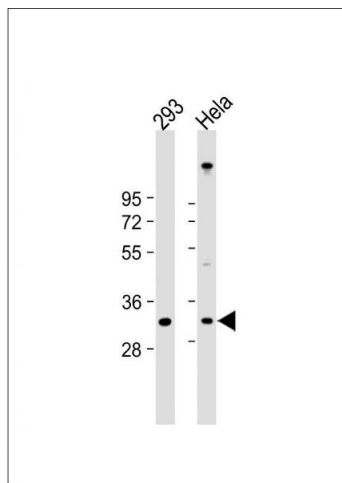
Expiry Date: 6 months

## Images



### Immunohistochemistry (Paraffin-embedded Sections)

**Image 1.** Immunohistochemical analysis of paraffin-embedded Human stomach tissue using A performed on the Leica® BOND RXm. Tissue was fixed with formaldehyde at room temperature, antigen retrieval was by heat mediation with a EDTA buffer (pH 9.0). Samples were incubated with primary Antibody (1:500) for 1 hours at room temperature. A undiluted biotinylated CRF Anti-Polyvalent HRP Polymer antibody was used as the secondary antibody.



### Western Blotting

**Image 2.** All lanes : Anti-DNASE1 Antibody (Center) at 1:1000 dilution Lane 1: 293 whole cell lysate Lane 2: HeLa whole cell lysate Lysates/proteins at 20 µg per lane. Secondary Goat Anti-Rabbit IgG, (H+L), Peroxidase conjugated at 1/10000 dilution. Predicted band size : 31 kDa Blocking/Dilution buffer: 5 % NFDM/TBST.