

Datasheet for ABIN6242298
anti-ECT2 antibody (AA 200-460)[Go to Product page](#)

1 Image

Overview

Quantity:	200 µL
Target:	ECT2
Binding Specificity:	AA 200-460
Reactivity:	Human
Host:	Mouse
Clonality:	Monoclonal
Conjugate:	This ECT2 antibody is un-conjugated
Application:	Western Blotting (WB)

Product Details

Immunogen:	This ECT2 antibody is generated from a mouse immunized with a KLH conjugated synthetic peptide between 200-460 amino acids from human ECT2.
Clone:	1691CT516-3-3
Isotype:	IgG1 kappa
Purification:	This antibody is purified through a protein G column, followed by dialysis against PBS.

Target Details

Target:	ECT2
Alternative Name:	ECT2 (ECT2 Products)
Background:	Guanine nucleotide exchange factor (GEF) that catalyzes the exchange of GDP for GTP.

Target Details

Promotes guanine nucleotide exchange on the Rho family members of small GTPases, like RHOA, RHOC, RAC1 and CDC42. Required for signal transduction pathways involved in the regulation of cytokinesis. Component of the centralspindlin complex that serves as a microtubule-dependent and Rho-mediated signaling required for the myosin contractile ring formation during the cell cycle cytokinesis. Regulates the translocation of RHOA from the central spindle to the equatorial region. Plays a role in the control of mitotic spindle assembly, regulates the activation of CDC42 in metaphase for the process of spindle fibers attachment to kinetochores before chromosome congression. Involved in the regulation of epithelial cell polarity, participates in the formation of epithelial tight junctions in a polarity complex PARD3-PARD6-protein kinase PRKCQ-dependent manner. Plays a role in the regulation of neurite outgrowth. Inhibits phenobarbital (PB)- induced NR1I3 nuclear translocation. Stimulates the activity of RAC1 through its association with the oncogenic PARD6A-PRKCI complex in cancer cells, thereby acting to coordinately drive tumor cell proliferation and invasion. Also stimulates genotoxic stress-induced RHOB activity in breast cancer cells leading to their cell death.

Molecular Weight: 103505

UniProt: [Q9H8V3](#)

Pathways: [Neurotrophin Signaling Pathway](#), [Cell-Cell Junction Organization](#)

Application Details

Application Notes: WB: 1:1000

Restrictions: For Research Use only

Handling

Format: Liquid

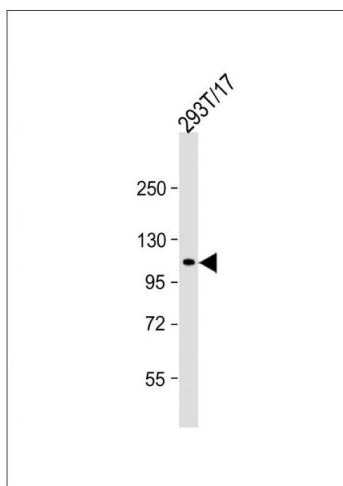
Buffer: Purified monoclonal antibody supplied in PBS with 0.09 % (W/V) sodium azide.

Preservative: Sodium azide

Precaution of Use: This product contains Sodium azide: a POISONOUS AND HAZARDOUS SUBSTANCE which should be handled by trained staff only.

Storage: 4 °C, -20 °C

Expiry Date: 6 months



Western Blotting

Image 1. Anti-ECT2 Antibody at 1:1000 dilution + 293T/17 whole cell lysate Lysates/proteins at 20 µg per lane. Secondary Goat Anti-mouse IgG, (H+L), Peroxidase conjugated at 1/10000 dilution. Predicted band size : 104 kDa Blocking/Dilution buffer: 5 % NFDM/TBST.