

Datasheet for ABIN6242301  
**anti-EIF4B antibody (C-Term)**[Go to Product page](#)

## 4 Images

## Overview

Quantity:	400 µL
Target:	EIF4B
Binding Specificity:	AA 546-575, C-Term
Reactivity:	Human
Host:	Rabbit
Clonality:	Polyclonal
Conjugate:	This EIF4B antibody is un-conjugated
Application:	Western Blotting (WB), Immunohistochemistry (Paraffin-embedded Sections) (IHC (p))

## Product Details

Immunogen:	This EIF4B antibody is generated from rabbits immunized with a KLH conjugated synthetic peptide between 546-575 amino acids from the C-terminal region of human EIF4B.
Clone:	RB11717
Isotype:	Ig Fraction
Predicted Reactivity:	M
Purification:	This antibody is prepared by Saturated Ammonium Sulfate (SAS) precipitation followed by dialysis against PBS.

## Target Details

Target:	EIF4B
---------	-------

## Target Details

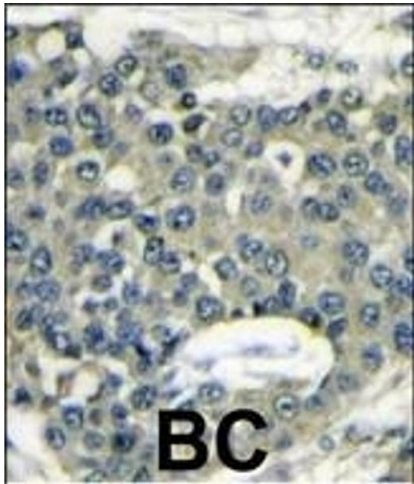
Alternative Name:	EIF4B ( <a href="#">EIF4B Products</a> )
Background:	EIF4B is required for the binding of mRNA to ribosomes. It functions in close association with EIF4-F and EIF4-A by binding near the 5'- terminal cap of mRNA in presence of EIF-4F and ATP. This gene also promotes the ATPase activity and the ATP-dependent RNA unwinding activity of both EIF4-A and EIF4-F
Molecular Weight:	69151
NCBI Accession:	<a href="#">NP_001408</a>
UniProt:	<a href="#">P23588</a>

## Application Details

Application Notes:	WB: 1:1000. WB: 1:1000. WB: 1:1000. IHC-P: 1:50~100
Restrictions:	For Research Use only

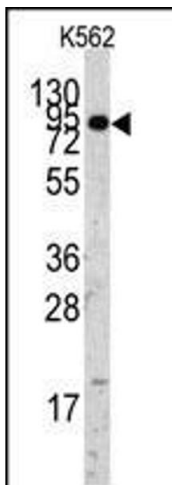
## Handling

Format:	Liquid
Buffer:	Purified polyclonal antibody supplied in PBS with 0.09 % (W/V) sodium azide.
Preservative:	Sodium azide
Precaution of Use:	This product contains Sodium azide: a POISONOUS AND HAZARDOUS SUBSTANCE which should be handled by trained staff only.
Storage:	4 °C,-20 °C
Expiry Date:	6 months



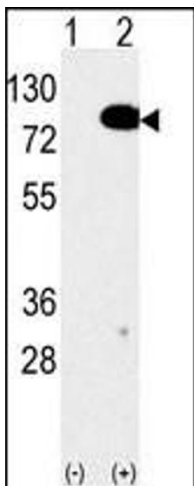
#### Immunohistochemistry (Paraffin-embedded Sections)

**Image 1.** Formalin-fixed and paraffin-embedded human breast carcinoma reacted with EIF4B Antibody (C-term) (ABIN6242301 and ABIN6577381) , which was peroxidase-conjugated to the secondary antibody, followed by DAB staining. This data demonstrates the use of this antibody for immunohistochemistry, clinical relevance has not been evaluated.



#### Western Blotting

**Image 2.** Western blot analysis of anti-EIF4B Antibody (C-term) Pab (ABIN6242301 and ABIN6577381) in K562 cell line lysates (35 µg/lane). EIF4B(arrow) was detected using the purified Pab.



#### Western Blotting

**Image 3.** Western blot analysis of anti-EIF4B Antibody (C-term) Pab (ABIN6242301 and ABIN6577381) in 293 cell line lysates transiently transfected with the EIF4B gene (2 µg/lane). EIF4B(arrow) was detected using the purified Pab.

Please check the [product details page](#) for more images. Overall 4 images are available for ABIN6242301.