



Datasheet for ABIN6242304
anti-EWSR1 antibody (C-Term)



[Go to Product page](#)

2 Images

Overview

Quantity:	400 µL
Target:	EWSR1
Binding Specificity:	AA 639-674, C-Term
Reactivity:	Human, Mouse
Host:	Rabbit
Clonality:	Polyclonal
Conjugate:	This EWSR1 antibody is un-conjugated
Application:	Western Blotting (WB), Immunofluorescence (IF)

Product Details

Immunogen:	This EWSR1 antibody is generated from a rabbit immunized with a KLH conjugated synthetic peptide between 639-674 amino acids from the C-terminal region of human EWSR1.
Clone:	RB51591
Isotype:	Ig Fraction
Purification:	This antibody is purified through a protein A column, followed by peptide affinity purification.

Target Details

Target:	EWSR1
Alternative Name:	EWSR1 (EWSR1 Products)
Background:	Might normally function as a transcriptional repressor. EWS-fusion-proteins (EFPS) may play a

Target Details

role in the tumorigenic process. They may disturb gene expression by mimicking, or interfering with the normal function of CTD-POLII within the transcription initiation complex. They may also contribute to an aberrant activation of the fusion protein target genes.

Molecular Weight: 68478

UniProt: [Q01844](#)

Application Details

Application Notes: IF: 1:25. WB: 1:1000

Restrictions: For Research Use only

Handling

Format: Liquid

Buffer: Purified polyclonal antibody supplied in PBS with 0.09 % (W/V) sodium azide.

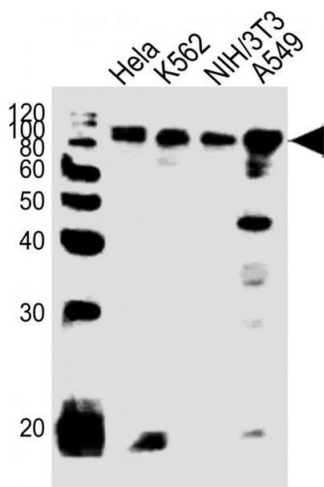
Preservative: Sodium azide

Precaution of Use: This product contains Sodium azide: a POISONOUS AND HAZARDOUS SUBSTANCE which should be handled by trained staff only.

Storage: 4 °C, -20 °C

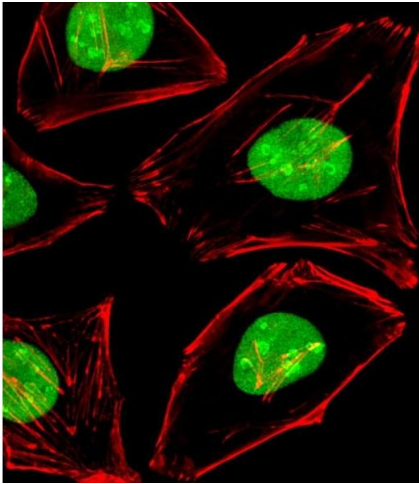
Expiry Date: 6 months

Images



Western Blotting

Image 1. All lanes : Anti-EWSR1 Antibody (C-term) at 1:1000 dilution Lane 1: HeLa whole cell lysates Lane 2: K562 whole cell lysates Lane 3: NIH/3T3 whole cell lysates Lane 4: A549 whole cell lysates Lysates/proteins at 20 µg per lane. Secondary Goat Anti-Rabbit IgG, (H+L), Peroxidase conjugated at 1/10000 dilution Predicted band size : 68 kDa Blocking/Dilution buffer: 5 % NFDM/TBST.



Immunofluorescence

Image 2. Immunofluorescent analysis of 4 % paraformaldehyde-fixed, 0.1 % Triton X-100 permeabilized HeLa (Human Cervical epithelial adenocarcinoma cell line) cells labeling EWSR1 with (ABIN6242304 and ABIN6577752) at 1/25 dilution, followed by Alexa Fluor 488-conjugated goat anti-rabbit IgG (1583138) secondary antibody at 1/400 dilution (green). Confocal image showing nuclear staining on HeLa cell line. Cytoplasmic actin is detected with Alexa Fluor® 555 conjugated with Phalloidin (OB16636430) at 1/100 dilution (red).