



[Go to Product page](#)

Datasheet for ABIN6242313
anti-DIXDC1 antibody (AA 282-316)

1 Image

Overview

Quantity:	400 µL
Target:	DIXDC1
Binding Specificity:	AA 282-316
Reactivity:	Zebrafish (Danio rerio)
Host:	Rabbit
Clonality:	Polyclonal
Conjugate:	This DIXDC1 antibody is un-conjugated
Application:	Western Blotting (WB)

Product Details

Immunogen:	This (DANRE) dixdc1a antibody is generated from a rabbit immunized with a KLH conjugated synthetic peptide between 282-316 amino acids of DANRE dixdc1a.
Clone:	RB46457
Isotype:	IgG
Purification:	This antibody is purified through a protein A column, followed by peptide affinity purification.

Target Details

Target:	DIXDC1
Alternative Name:	dixdc1a (DIXDC1 Products)
Background:	Functions as a positive effector of the Wnt signaling pathway regulating antero-posterior neural

Target Details

patterning.

Molecular Weight: 50439

UniProt: [Q804T6](#)

Application Details

Application Notes: WB: 1:1000

Restrictions: For Research Use only

Handling

Format: Liquid

Buffer: Purified polyclonal antibody supplied in PBS with 0.09 % (W/V) sodium azide.

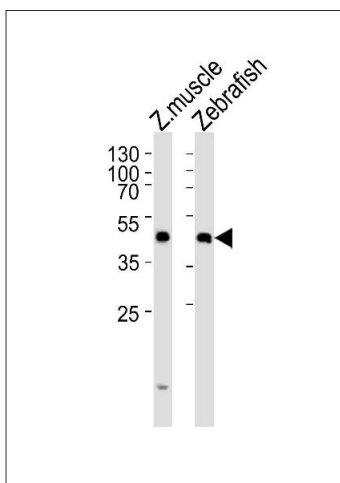
Preservative: Sodium azide

Precaution of Use: This product contains Sodium azide: a POISONOUS AND HAZARDOUS SUBSTANCE which should be handled by trained staff only.

Storage: 4 °C,-20 °C

Expiry Date: 6 months

Images



Western Blotting

Image 1. Western blot analysis of lysates from zebra fish muscle, Zebrafish tissue lysate (from left to right), using (DANRE) dixdc1a Antibody (Center) Azb18712c. Azb18712c was diluted at 1:1000 at each lane. A goat anti-rabbit IgG H&L(HRP) at 1:10000 dilution was used as the secondary antibody. Lysates at 35 µg per lane.