



[Go to Product page](#)

Datasheet for ABIN6242338
anti-FUNDC1 antibody (AA 94-126)

1 Image

Overview

Quantity:	400 µL
Target:	FUNDC1
Binding Specificity:	AA 94-126
Reactivity:	Zebrafish (Danio rerio)
Host:	Rabbit
Clonality:	Polyclonal
Conjugate:	This FUNDC1 antibody is un-conjugated
Application:	Western Blotting (WB)

Product Details

Immunogen:	This DANRE fundc1 antibody is generated from a rabbit immunized with a KLH conjugated synthetic peptide between 94-126 amino acids from DANRE fundc1.
Clone:	RB51998
Isotype:	Ig Fraction
Purification:	This antibody is purified through a protein A column, followed by peptide affinity purification.

Target Details

Target:	FUNDC1
Alternative Name:	fundc1 (FUNDC1 Products)
Background:	Acts as an activator of hypoxia-induced mitophagy, an important mechanism for mitochondrial

Target Details

quality control (By similarity).

Molecular Weight: 16744

UniProt: [Q6DH87](#)

Application Details

Application Notes: WB: 1:1000

Restrictions: For Research Use only

Handling

Format: Liquid

Buffer: Purified polyclonal antibody supplied in PBS with 0.09 % (W/V) sodium azide.

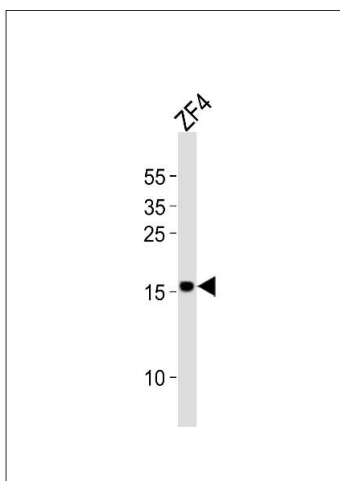
Preservative: Sodium azide

Precaution of Use: This product contains Sodium azide: a POISONOUS AND HAZARDOUS SUBSTANCE which should be handled by trained staff only.

Storage: 4 °C,-20 °C

Expiry Date: 6 months

Images



Western Blotting

Image 1. Western blot analysis of lysate from ZF4 cell line, using DANRE fundc1 Antibody (Center) (ABIN6242338 and ABIN6577852). (ABIN6242338 and ABIN6577852) was diluted at 1:1000. A goat anti-rabbit IgG H&L(HRP) at 1:10000 dilution was used as the secondary antibody. Lysate at 20 µg.