

Datasheet for ABIN6242356  
**anti-GATA6 antibody (C-Term)**[Go to Product page](#)

## 1 Image

## Overview

Quantity:	400 µL
Target:	GATA6
Binding Specificity:	AA 485-518, C-Term
Reactivity:	Human, Mouse
Host:	Rabbit
Clonality:	Polyclonal
Conjugate:	This GATA6 antibody is un-conjugated
Application:	Western Blotting (WB)

## Product Details

Immunogen:	This Mouse Gata6 antibody is generated from a rabbit immunized with a KLH conjugated synthetic peptide between 485-518 amino acids from the C-terminal region of human Mouse Gata6.
Clone:	RB50933
Isotype:	Ig Fraction
Predicted Reactivity:	Rat
Purification:	This antibody is purified through a protein A column, followed by peptide affinity purification.

## Target Details

Target:	GATA6
---------	-------

## Target Details

Alternative Name:	Gata6 ( <a href="#">GATA6 Products</a> )
Background:	Transcriptional activator that regulates SEMA3C and PLXNA2. Involved in gene regulation specifically in the gastric epithelium (By similarity).
Molecular Weight:	59307
UniProt:	<a href="#">Q61169</a>

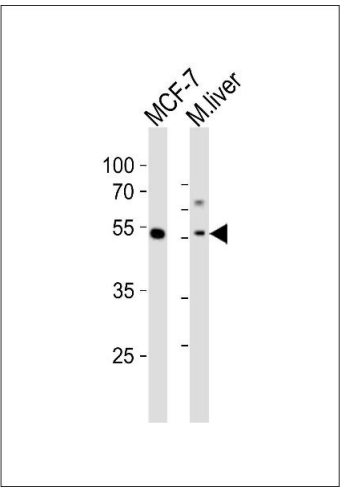
## Application Details

Application Notes:	WB: 1:1000
Restrictions:	For Research Use only

## Handling

Format:	Liquid
Buffer:	Purified polyclonal antibody supplied in PBS with 0.09 % (W/V) sodium azide.
Preservative:	Sodium azide
Precaution of Use:	This product contains Sodium azide: a POISONOUS AND HAZARDOUS SUBSTANCE which should be handled by trained staff only.
Storage:	4 °C,-20 °C
Expiry Date:	6 months

## Images



### Western Blotting

**Image 1.** Western blot analysis of lysates from MCF-7 cell line, mouse liver tissue lysate (from left to right), using Gata6 Antibody (C-term) (ABIN6242356 and ABIN6577634). (ABIN6242356 and ABIN6577634) was diluted at 1:1000 at each lane. A goat anti-rabbit IgG H&L(HRP) at 1:10000 dilution was used as the secondary antibody. Lysates at 20 µg per lane.