

Datasheet for ABIN6242360
anti-GFRA1 antibody (C-Term)[Go to Product page](#)

1 Image

Overview

Quantity:	50 µL
Target:	GFRA1
Binding Specificity:	AA 381-415, C-Term
Reactivity:	Mouse, Rat
Host:	Rabbit
Clonality:	Polyclonal
Conjugate:	This GFRA1 antibody is un-conjugated
Application:	Western Blotting (WB)

Product Details

Immunogen:	This GFRA1 antibody is generated from a rabbit immunized with a KLH conjugated synthetic peptide between 381-415 amino acids from the C-terminal region of human GFRA1.
Clone:	RB50601
Isotype:	Ig Fraction
Purification:	This antibody is purified through a protein A column, followed by peptide affinity purification.

Target Details

Target:	GFRA1
Alternative Name:	GFRA1 (GFRA1 Products)
Background:	Receptor for GDNF. Mediates the GDNF-induced autophosphorylation and activation of the RET

Target Details

receptor (By similarity).

Molecular Weight: 51456

UniProt: [P56159](#)

Application Details

Application Notes: WB: 1:1000

Restrictions: For Research Use only

Handling

Format: Liquid

Buffer: Purified polyclonal antibody supplied in PBS with 0.09 % (W/V) sodium azide.

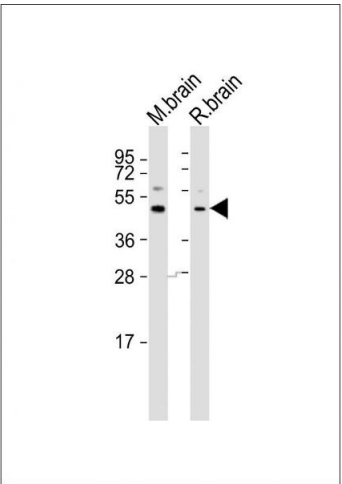
Preservative: Sodium azide

Precaution of Use: This product contains Sodium azide: a POISONOUS AND HAZARDOUS SUBSTANCE which should be handled by trained staff only.

Storage: 4 °C,-20 °C

Expiry Date: 6 months

Images



Western Blotting

Image 1. All lanes : Anti-GFRA1 Antibody (C-term) at 1:1000 dilution Lane 1: mouse brain lysates Lane 2: rat brain lysates Lysates/proteins at 20 µg per lane. Secondary Goat Anti-Rabbit IgG, (H+L), Peroxidase conjugated at 1/10000 dilution. Predicted band size : 51 kDa Blocking/Dilution buffer: 5 % NFDM/TBST.