



[Go to Product page](#)

Datasheet for ABIN6242361

anti-GLI1 antibody (AA 196-230)

1 Image

Overview

Quantity:	200 µL
Target:	GLI1
Binding Specificity:	AA 196-230
Reactivity:	Mouse
Host:	Rabbit
Clonality:	Polyclonal
Conjugate:	This GLI1 antibody is un-conjugated
Application:	Western Blotting (WB)

Product Details

Immunogen:	This GLI1 antibody is generated from a rabbit immunized with a KLH conjugated synthetic peptide between 196-230 amino acids from human GLI1.
Clone:	RB54395
Isotype:	Ig Fraction
Purification:	This antibody is purified through a protein A column, followed by peptide affinity purification.

Target Details

Target:	GLI1
Alternative Name:	GLI1 (GLI1 Products)
Background:	Acts as a transcriptional activator. May regulate the transcription of specific genes during

Target Details

normal development. May play a role in craniofacial development and digital development, as well as development of the central nervous system and gastrointestinal tract. Mediates SHH signaling and thus cell proliferation and differentiation.

Molecular Weight: 117904

UniProt: [P08151](#)

Pathways: [Hedgehog Signaling](#), [Dopaminergic Neurogenesis](#)

Application Details

Application Notes: WB: 1:2000

Restrictions: For Research Use only

Handling

Format: Liquid

Buffer: Purified polyclonal antibody supplied in PBS with 0.09 % (W/V) sodium azide.

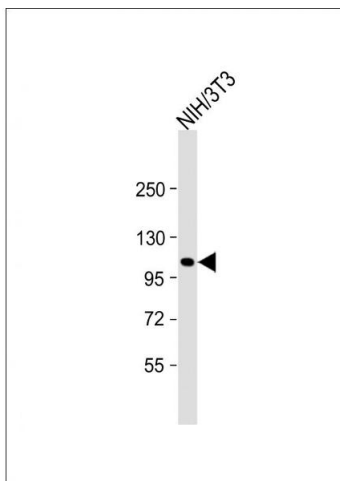
Preservative: Sodium azide

Precaution of Use: This product contains Sodium azide: a POISONOUS AND HAZARDOUS SUBSTANCE which should be handled by trained staff only.

Storage: 4 °C,-20 °C

Expiry Date: 6 months

Images



Western Blotting

Image 1. Anti-GLI1 Antibody (N-Term) at 1:2000 dilution + NIH/3T3 whole cell lysate Lysates/proteins at 20 µg per lane. Secondary Goat Anti-Rabbit IgG, (H+L), Peroxidase conjugated at 1/10000 dilution. Predicted band size : 118 kDa Blocking/Dilution buffer: 5 % NFD/MTBST.