

Datasheet for ABIN6242367
anti-Gelsolin antibody (C-Term)



[Go to Product page](#)

3 Images

Overview

Quantity:	400 µL
Target:	Gelsolin (GSN)
Binding Specificity:	AA 714-743, C-Term
Reactivity:	Human, Mouse
Host:	Rabbit
Clonality:	Polyclonal
Conjugate:	This Gelsolin antibody is un-conjugated
Application:	Western Blotting (WB), Immunohistochemistry (Paraffin-embedded Sections) (IHC (p)), Flow Cytometry (FACS)

Product Details

Immunogen:	This GSN antibody is generated from rabbits immunized with a KLH conjugated synthetic peptide between 714-743 amino acids from the C-terminal region of human GSN.
Clone:	RB18722
Isotype:	Ig Fraction
Predicted Reactivity:	B, Pig, Rat
Purification:	This antibody is prepared by Saturated Ammonium Sulfate (SAS) precipitation followed by dialysis against PBS.

Target Details

Target:	Gelsolin (GSN)
---------	----------------

Target Details

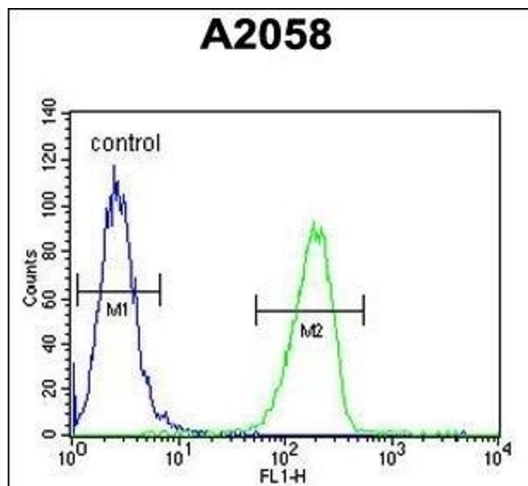
Alternative Name:	GSN (GSN Products)
Background:	GSN binds to the 'plus' ends of actin monomers and filaments to prevent monomer exchange. The calcium-regulated protein functions in both assembly and disassembly of actin filaments. Defects in this protein are a cause of familial amyloidosis Finnish type (FAF).
Molecular Weight:	85698
NCBI Accession:	NP_000168 , NP_001121134 , NP_001121135 , NP_001121136 , NP_001121137 , NP_001121138 , NP_001121139 , NP_001244958 , NP_001244959 , NP_937895
UniProt:	P06396
Pathways:	Caspase Cascade in Apoptosis , Regulation of Actin Filament Polymerization , Autophagy

Application Details

Application Notes:	WB: 1:1000-1:2000. IHC-P: 1:50~100. FC: 1:10~50
Restrictions:	For Research Use only

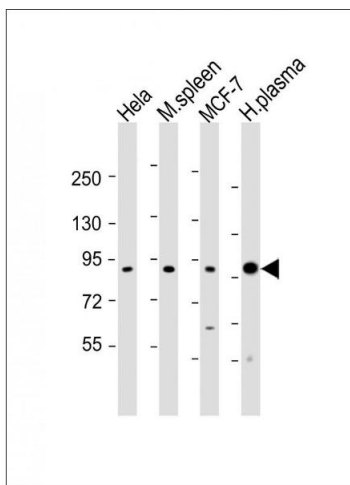
Handling

Format:	Liquid
Buffer:	Purified polyclonal antibody supplied in PBS with 0.09 % (W/V) sodium azide.
Preservative:	Sodium azide
Precaution of Use:	This product contains Sodium azide: a POISONOUS AND HAZARDOUS SUBSTANCE which should be handled by trained staff only.
Storage:	4 °C,-20 °C
Expiry Date:	6 months



Flow Cytometry

Image 1. GSN Antibody (C-term) (ABIN6242367 and ABIN6578988) flow cytometric analysis of cells (right histogram) compared to a negative control cell (left histogram). FITC-conjugated goat-anti-rabbit secondary antibodies were used for the analysis.



Western Blotting

Image 2. All lanes : Anti-GSN Antibody (C-term) at 1:1000-1:2000 dilution Lane 1: HeLa whole cell lysates Lane 2: mouse spleen lysates Lane 3: MCF-7 whole cell lysates Lane 4: human plasma lysates Lysates/proteins at 20 µg per lane. Secondary Goat Anti-Rabbit IgG, (H+L), Peroxidase conjugated at 1/10000 dilution. Predicted band size : 86 kDa Blocking/Dilution buffer: 5 % NFDN/TBST.



Immunohistochemistry (Paraffin-embedded Sections)

Image 3. GSN Antibody (C-term) (R) IHC analysis in formalin fixed and paraffin embedded human Skeletal muscle tissue followed by peroxidase conjugation of the secondary antibody and DAB staining. This data demonstrates the use of the GSN Antibody (C-term) for immunohistochemistry. Clinical relevance has not been evaluated.