

Datasheet for ABIN6242397

anti-IL-24 antibody**3** Images[Go to Product page](#)

Overview

Quantity:	400 µL
Target:	IL-24 (IL24)
Reactivity:	Human
Host:	Rabbit
Clonality:	Polyclonal
Conjugate:	This IL-24 antibody is un-conjugated
Application:	Western Blotting (WB), Immunohistochemistry (Paraffin-embedded Sections) (IHC (p)), Flow Cytometry (FACS)

Product Details

Immunogen:	This IL24 antibody is generated from a rabbit immunized with a recombinant protein.
Clone:	RB52609
Isotype:	Ig Fraction
Purification:	This antibody is purified through a protein A column, followed by peptide affinity purification.

Target Details

Target:	IL-24 (IL24)
Alternative Name:	IL24 (IL24 Products)
Background:	Has antiproliferative properties on melanoma cells and may contribute to terminal cell differentiation.

Target Details

Molecular Weight:	23825
UniProt:	Q13007
Pathways:	Cellular Response to Molecule of Bacterial Origin , Positive Regulation of Endopeptidase Activity , Autophagy

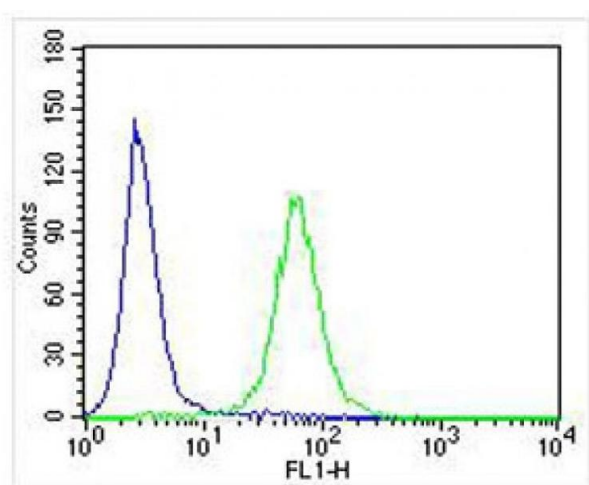
Application Details

Application Notes:	WB: 1:2000. IHC-P: 1:25. FC: 1:25
Restrictions:	For Research Use only

Handling

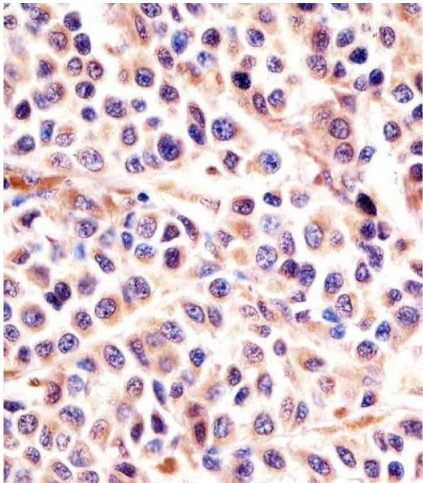
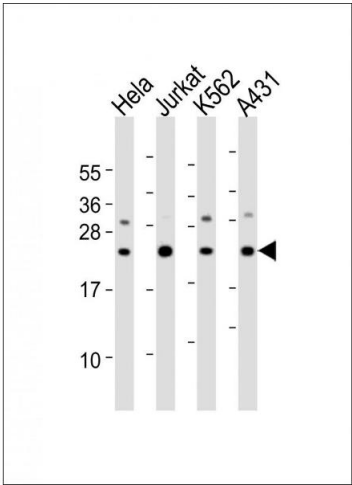
Format:	Liquid
Buffer:	Purified polyclonal antibody supplied in PBS with 0.09 % (W/V) sodium azide.
Preservative:	Sodium azide
Precaution of Use:	This product contains Sodium azide: a POISONOUS AND HAZARDOUS SUBSTANCE which should be handled by trained staff only.
Storage:	4 °C,-20 °C
Expiry Date:	6 months

Images



Flow Cytometry

Image 1. Overlay histogram showing U-2 OS cells stained with (ABIN6242397 and ABIN6578004) (green line). The cells were fixed with 2 % paraformaldehyde (10 min) and then permeabilized with 90 % methanol for 10 min. The cells were then incubated in 2 % bovine serum albumin to block non-specific protein-protein interactions followed by the antibody ((ABIN6242397 and ABIN6578004), 1:25 dilution) for 60 min at 37 °C. The secondary antibody used was Alexa Fluor® 488 goat anti-rabbit IgG (H+L) (1583138) at 1/400 dilution for 40 min at 37 °C. Isotype control antibody (blue line) was rabbit IgG1 (1 µg/1x10⁶ cells) used under the



same conditions. Acquisition of >10, 000 events was performed.

Western Blotting

Image 2. All lanes : Anti-IL24 Antibody at 1:2000 dilution
Lane 1: HeLa whole cell lysates Lane 2: Jurkat whole cell lysates Lane 3: K562 whole cell lysates Lane 4: A431 whole cell lysates Lysates/proteins at 20 µg per lane. Secondary Goat Anti-Rabbit IgG, (H+L), Peroxidase conjugated at 1/10000 dilution Predicted band size : 24 kDa Blocking/Dilution buffer: 5 % NFDm/TBST.

Immunohistochemistry (Paraffin-embedded Sections)

Image 3. (ABIN6242397 and ABIN6578004) staining IL24 in human melanoma sections by Immunohistochemistry (IHC- P - paraformaldehyde-fixed, paraffin-embedded sections). Tissue was fixed with formaldehyde and blocked with 3 % BSA for 0. 5 hour at room temperature, antigen retrieval was by heat mediation with a citrate buffer (pH 6). Samples were incubated with primary antibody (1/25) for 1 hours at 37 °C. A undiluted biotinylated goat polyvalent antibody was used as the secondary antibody.