

Datasheet for ABIN6242402
anti-PDX1 antibody (N-Term)[Go to Product page](#)

1 Image

Overview

Quantity:	400 µL
Target:	PDX1
Binding Specificity:	AA 21-55, N-Term
Reactivity:	Mouse, Rat
Host:	Rabbit
Clonality:	Polyclonal
Conjugate:	This PDX1 antibody is un-conjugated
Application:	Western Blotting (WB)

Product Details

Immunogen:	This PDX1 antibody is generated from a rabbit immunized with a KLH conjugated synthetic peptide between 21-55 amino acids from the N-terminal region of human PDX1.
Clone:	RB51570
Isotype:	Ig Fraction
Purification:	This antibody is purified through a protein A column, followed by peptide affinity purification.

Target Details

Target:	PDX1
Alternative Name:	PDX1 (PDX1 Products)
Background:	Activates insulin, somatostatin, glucokinase, islet amyloid polypeptide and glucose transporter

Target Details

type 2 gene transcription. Particularly involved in glucose-dependent regulation of insulin gene transcription. As part of a PDX1:PBX1b:MEIS2b complex in pancreatic acinar cells is involved in the transcriptional activation of the ELA1 enhancer, the complex binds to the enhancer B element and cooperates with the transcription factor 1 complex (PTF1) bound to the enhancer A element. Binds preferentially the DNA motif 5'-[CT]TAAT[TG]-3'. During development, specifies the early pancreatic epithelium, permitting its proliferation, branching and subsequent differentiation. At adult stage, required for maintaining the hormone-producing phenotype of the beta-cell.

Molecular Weight: 30771

UniProt: [P52945](#)

Pathways: [Nuclear Receptor Transcription Pathway](#), [Positive Regulation of Peptide Hormone Secretion](#), [Steroid Hormone Mediated Signaling Pathway](#), [Hormone Transport](#), [Carbohydrate Homeostasis](#), [Chromatin Binding](#), [Maintenance of Protein Location](#)

Application Details

Application Notes: WB: 1:1000

Restrictions: For Research Use only

Handling

Format: Liquid

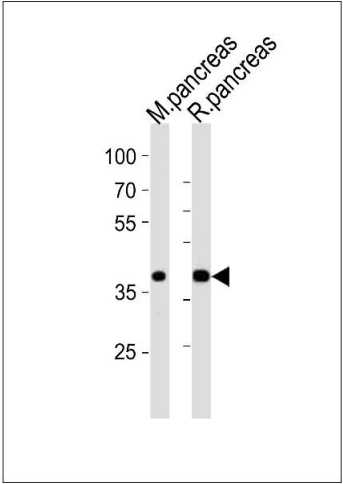
Buffer: Purified polyclonal antibody supplied in PBS with 0.09 % (W/V) sodium azide.

Preservative: Sodium azide

Precaution of Use: This product contains Sodium azide: a POISONOUS AND HAZARDOUS SUBSTANCE which should be handled by trained staff only.

Storage: 4 °C,-20 °C

Expiry Date: 6 months



Western Blotting

Image 1. Western blot analysis of lysates from mouse pancreas and rat pancreas tissue (from left to right), using PDX1 Antibody (N-term) (ABIN6242402 and ABIN6577733). (ABIN6242402 and ABIN6577733) was diluted at 1:1000 at each lane. A goat anti-rabbit IgG H&L(HRP) at 1:10000 dilution was used as the secondary antibody. Lysates at 20 µg per lane.