

Datasheet for ABIN6242416
anti-KHDRBS1 antibody (AA 259-291)[Go to Product page](#)

2 Images

Overview

Quantity:	200 µL
Target:	KHDRBS1
Binding Specificity:	AA 259-291
Reactivity:	Human, Mouse
Host:	Rabbit
Clonality:	Polyclonal
Conjugate:	This KHDRBS1 antibody is un-conjugated
Application:	Western Blotting (WB), Immunohistochemistry (Paraffin-embedded Sections) (IHC (p))

Product Details

Immunogen:	This KHDRBS1 antibody is generated from a rabbit immunized with a KLH conjugated synthetic peptide between 259-291 amino acids from the Central region of human KHDRBS1.
Clone:	RB54155
Isotype:	Ig Fraction
Purification:	This antibody is purified through a protein A column, followed by peptide affinity purification.

Target Details

Target:	KHDRBS1
Alternative Name:	KHDRBS1 (KHDRBS1 Products)
Background:	Recruited and tyrosine phosphorylated by several receptor systems, for example the T-cell,

Target Details

leptin and insulin receptors. Once phosphorylated, functions as an adapter protein in signal transduction cascades by binding to SH2 and SH3 domain- containing proteins. Role in G2-M progression in the cell cycle. Represses CBP-dependent transcriptional activation apparently by competing with other nuclear factors for binding to CBP. Also acts as a putative regulator of mRNA stability and/or translation rates and mediates mRNA nuclear export. Positively regulates the association of constitutive transport element (CTE)-containing mRNA with large polyribosomes and translation initiation. According to some authors, is not involved in the nucleocytoplasmic export of unspliced (CTE)-containing RNA species according to (PubMed:< a href="http://www.uniprot.org/citations/22253824" target="_blank">22253824).

Molecular Weight: 48227

UniProt: [Q07666](#)

Pathways: [NF-kappaB Signaling](#), [Neurotrophin Signaling Pathway](#), [Autophagy](#)

Application Details

Application Notes: WB: 1:2000. IHC-P: 1:25

Restrictions: For Research Use only

Handling

Format: Liquid

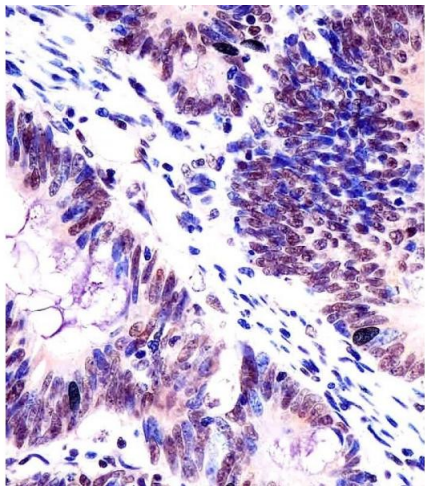
Buffer: Purified polyclonal antibody supplied in PBS with 0.09 % (W/V) sodium azide.

Preservative: Sodium azide

Precaution of Use: This product contains Sodium azide: a POISONOUS AND HAZARDOUS SUBSTANCE which should be handled by trained staff only.

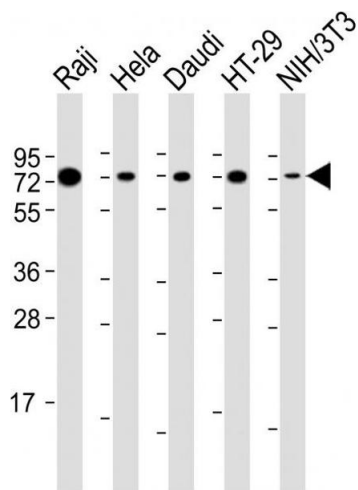
Storage: 4 °C,-20 °C

Expiry Date: 6 months



Immunohistochemistry (Paraffin-embedded Sections)

Image 1. (ABIN6242416 and ABIN6578503) staining KHDRBS1 in human colorectal carcinoma tissue sections by Immunohistochemistry (IHC-P - paraformaldehyde-fixed, paraffin-embedded sections). Tissue was fixed with formaldehyde and blocked with 3 % BSA for 0.5 hour at room temperature, antigen retrieval was by heat mediation with a citrate buffer (pH 6). Samples were incubated with primary antibody (1/25) for 1 hours at 37 °C. A undiluted biotinylated goat polyvalent antibody was used as the secondary antibody.



Western Blotting

Image 2. All lanes : Anti-KHDRBS1 Antibody (Center) at 1:2000 dilution Lane 1: Raji whole cell lysate Lane 2: HeLa whole cell lysate Lane 3: Daudi whole cell lysate Lane 4: HT-29 whole cell lysate Lane 5: NIH/3T3 whole cell lysate Lysates/proteins at 20 µg per lane. Secondary Goat Anti-Rabbit IgG, (H+L), Peroxidase conjugated at 1/10000 dilution. Predicted band size : 48 kDa Blocking/Dilution buffer: 5 % NFDM/TBST.