

Datasheet for ABIN6242418  
**anti-KIT Ligand antibody (C-Term)**[Go to Product page](#)

## 2 Images

## Overview

Quantity:	400 µL
Target:	KIT Ligand (KITLG)
Binding Specificity:	AA 201-234, C-Term
Reactivity:	Human
Host:	Rabbit
Clonality:	Polyclonal
Conjugate:	This KIT Ligand antibody is un-conjugated
Application:	Western Blotting (WB)

## Product Details

Immunogen:	This KITLG antibody is generated from a rabbit immunized with a KLH conjugated synthetic peptide between 201-234 amino acids from the C-terminal region of human KITLG.
Clone:	RB50736
Isotype:	Ig Fraction
Purification:	This antibody is purified through a protein A column, followed by peptide affinity purification.

## Target Details

Target:	KIT Ligand (KITLG)
Alternative Name:	KITLG ( <a href="#">KITLG Products</a> )
Background:	Ligand for the receptor-type protein-tyrosine kinase KIT. Plays an essential role in the regulation

## Target Details

of cell survival and proliferation, hematopoiesis, stem cell maintenance, gametogenesis, mast cell development, migration and function, and in melanogenesis. KITLG/SCF binding can activate several signaling pathways. Promotes phosphorylation of PIK3R1, the regulatory subunit of phosphatidylinositol 3-kinase, and subsequent activation of the kinase AKT1. KITLG/SCF and KIT also transmit signals via GRB2 and activation of RAS, RAF1 and the MAP kinases MAPK1/ERK2 and/or MAPK3/ERK1. KITLG/SCF and KIT promote activation of STAT family members STAT1, STAT3 and STAT5. KITLG/SCF and KIT promote activation of PLCG1, leading to the production of the cellular signaling molecules diacylglycerol and inositol 1,4,5-trisphosphate. KITLG/SCF acts synergistically with other cytokines, probably interleukins.

Molecular Weight: 30899

UniProt: [P21583](#)

Pathways: [RTK Signaling](#), [Fc-epsilon Receptor Signaling Pathway](#), [EGFR Signaling Pathway](#), [Neurotrophin Signaling Pathway](#)

## Application Details

Application Notes: WB: 1:1000. WB: 1:2000

Restrictions: For Research Use only

## Handling

Format: Liquid

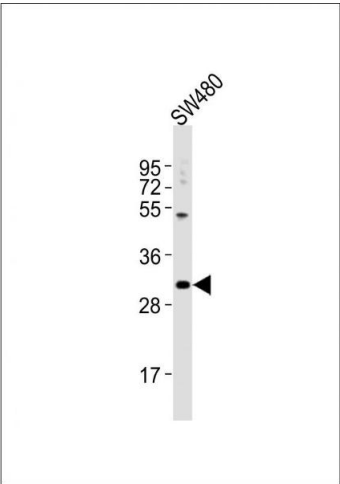
Buffer: Purified polyclonal antibody supplied in PBS with 0.09 % (W/V) sodium azide.

Preservative: Sodium azide

Precaution of Use: This product contains Sodium azide: a POISONOUS AND HAZARDOUS SUBSTANCE which should be handled by trained staff only.

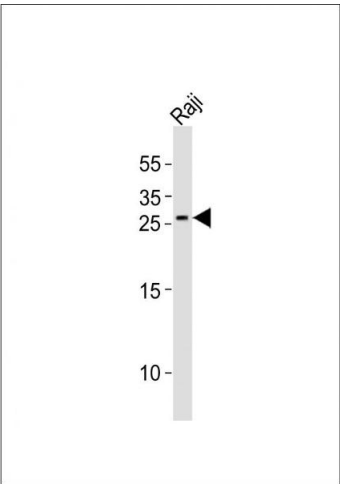
Storage: 4 °C,-20 °C

Expiry Date: 6 months



#### Western Blotting

**Image 1.** Anti-KITLG Antibody (C-term) at 1:2000 dilution + S whole cell lysates. Lysates/proteins at 20 µg per lane. Secondary Goat Anti-Rabbit IgG, (H+L), Peroxidase conjugated at 1/10000 dilution. Predicted band size : 31 kDa. Blocking/Dilution buffer: 5 % NFDM/TBST.



#### Western Blotting

**Image 2.** Anti-KITLG Antibody (C-term) at 1:1000 dilution + Raji whole cell lysates. Lysates/proteins at 20 µg per lane. Secondary Goat Anti-Rabbit IgG, (H+L), Peroxidase conjugated at 1/10000 dilution. Predicted band size : 31 kDa. Blocking/Dilution buffer: 5 % NFDM/TBST.