

Datasheet for ABIN6242422

**anti-LIM Domain Binding 3 Protein antibody (N-Term)**[Go to Product page](#)**1** Image

## Overview

Quantity:	400 µL
Target:	LIM Domain Binding 3 Protein (LDB3)
Binding Specificity:	AA 101-134, N-Term
Reactivity:	Mouse
Host:	Rabbit
Clonality:	Polyclonal
Conjugate:	This LIM Domain Binding 3 Protein antibody is un-conjugated
Application:	Western Blotting (WB)

## Product Details

Immunogen:	This LDB3 antibody is generated from a rabbit immunized with a KLH conjugated synthetic peptide between 101-134 amino acids from the N-terminal region of human LDB3.
Clone:	RB48837
Isotype:	Ig Fraction
Purification:	This antibody is purified through a protein A column, followed by peptide affinity purification.

## Target Details

Target:	LIM Domain Binding 3 Protein (LDB3)
Alternative Name:	LDB3 ( <a href="#">LDB3 Products</a> )
Background:	May function as an adapter in striated muscle to couple protein kinase C-mediated signaling via

## Target Details

its LIM domains to the cytoskeleton.

Molecular Weight: 77135

UniProt: [O75112](#)

## Application Details

Application Notes: WB: 1:1000

Restrictions: For Research Use only

## Handling

Format: Liquid

Buffer: Purified polyclonal antibody supplied in PBS with 0.09 % (W/V) sodium azide.

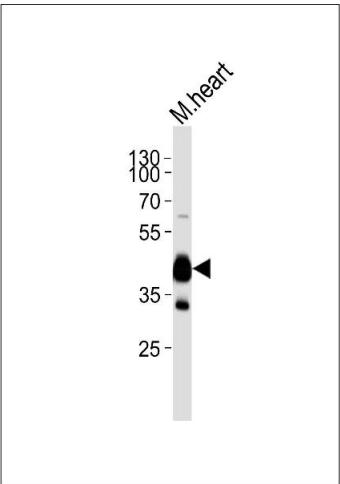
Preservative: Sodium azide

Precaution of Use: This product contains Sodium azide: a POISONOUS AND HAZARDOUS SUBSTANCE which should be handled by trained staff only.

Storage: 4 °C,-20 °C

Expiry Date: 6 months

## Images



### Western Blotting

**Image 1.** Western blot analysis of lysate from mouse heart tissue lysate, using LDB3 Antibody (N-term) (ABIN6242422 and ABIN6577450). (ABIN6242422 and ABIN6577450) was diluted at 1:1000. A goat anti-rabbit IgG H&L(HRP) at 1:5000 dilution was used as the secondary antibody. Lysate at 35 µg.