

Datasheet for ABIN6242423
anti-LEO1 antibody (C-Term)[Go to Product page](#)

1 Image

Overview

Quantity:	400 µL
Target:	LEO1
Binding Specificity:	AA 616-650, C-Term
Reactivity:	Rat, Mouse
Host:	Rabbit
Clonality:	Polyclonal
Conjugate:	This LEO1 antibody is un-conjugated
Application:	Western Blotting (WB)

Product Details

Immunogen:	This Mouse Leo1 antibody is generated from a rabbit immunized with a KLH conjugated synthetic peptide between 616-650 amino acids from the C-terminal region of Mouse Leo1.
Clone:	RB50947
Isotype:	Ig Fraction
Purification:	This antibody is purified through a protein A column, followed by peptide affinity purification.

Target Details

Target:	LEO1
Alternative Name:	Leo1 (LEO1 Products)
Background:	Component of the PAF1 complex (PAF1C) which has multiple functions during transcription by

Target Details

RNA polymerase II and is implicated in regulation of development and maintenance of embryonic stem cell pluripotency. PAF1C associates with RNA polymerase II through interaction with POLR2A CTD non- phosphorylated and 'Ser-2'- and 'Ser-5'-phosphorylated forms and is involved in transcriptional elongation, acting both indepentently and synergistically with TCEA1 and in cooperation with the DSIF complex and HTATSF1. PAF1C is required for transcription of Hox and Wnt target genes. PAF1C is involved in hematopoiesis and stimulates transcriptional activity of KMT2A/MLL1. PAF1C is involved in histone modifications such as ubiquitination of histone H2B and methylation on histone H3 'Lys- 4' (H3K4me3). PAF1C recruits the RNF20/40 E3 ubiquitin-protein ligase complex and the E2 enzyme UBE2A or UBE2B to chromatin which mediate monoubiquitination of 'Lys-120' of histone H2B (H2BK120ub1), UB2A/B-mediated H2B ubiquitination is proposed to be coupled to transcription. PAF1C is involved in mRNA 3' end formation probably through association with cleavage and poly(A) factors. Involved in polyadenylation of mRNA precursors. Connects PAF1C to Wnt signaling (By similarity).

Molecular Weight: 75597

UniProt: [Q5XJE5](#)

Pathways: [Stem Cell Maintenance](#)

Application Details

Application Notes: WB: 1:1000

Restrictions: For Research Use only

Handling

Format: Liquid

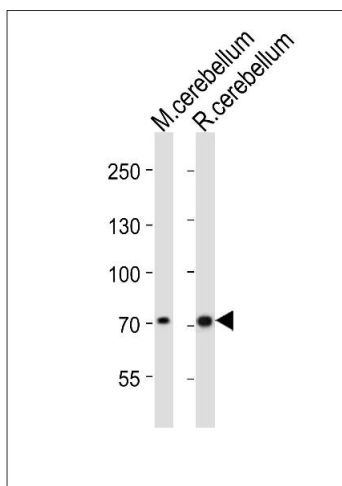
Buffer: Purified polyclonal antibody supplied in PBS with 0.09 % (W/V) sodium azide.

Preservative: Sodium azide

Precaution of Use: This product contains Sodium azide: a POISONOUS AND HAZARDOUS SUBSTANCE which should be handled by trained staff only.

Storage: 4 °C, -20 °C

Expiry Date: 6 months



Western Blotting

Image 1. Western blot analysis of lysates from mouse cerebellum, rat cerebellum tissue lysate (from left to right), using Leo1 Antibody (C-term) (ABIN6242423 and ABIN6577877). (ABIN6242423 and ABIN6577877) was diluted at 1:1000 at each lane. A goat anti-rabbit IgG H&L(HRP) at 1:10000 dilution was used as the secondary antibody. Lysates at 20 µg per lane.