

Datasheet for ABIN6242425
anti-LHX1 antibody (C-Term)[Go to Product page](#)

1 Image

Overview

Quantity:	400 µL
Target:	LHX1
Binding Specificity:	AA 332-365, C-Term
Reactivity:	Human
Host:	Rabbit
Clonality:	Polyclonal
Conjugate:	This LHX1 antibody is un-conjugated
Application:	Western Blotting (WB)

Product Details

Immunogen:	This Mouse Lhx1 antibody is generated from a rabbit immunized with a KLH conjugated synthetic peptide between 332-365 amino acids from the C-terminal region of Mouse Lhx1.
Clone:	RB51968
Isotype:	Ig Fraction
Predicted Reactivity:	Rat
Purification:	This antibody is purified through a protein A column, followed by peptide affinity purification.

Target Details

Target:	LHX1
Alternative Name:	Lhx1 (LHX1 Products)

Target Details

Background: Potential transcription factor. May play a role in early mesoderm formation and later in lateral mesoderm differentiation and neurogenesis.

Molecular Weight: 44780

UniProt: [P63006](#)

Application Details

Application Notes: WB: 1:1000

Restrictions: For Research Use only

Handling

Format: Liquid

Buffer: Purified polyclonal antibody supplied in PBS with 0.09 % (W/V) sodium azide.

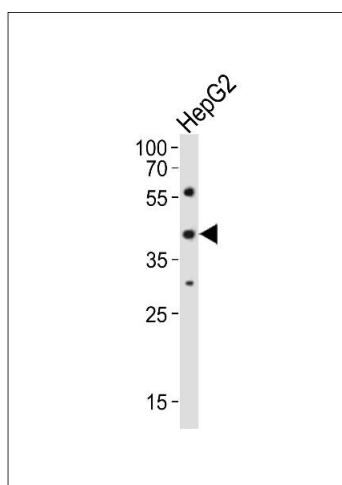
Preservative: Sodium azide

Precaution of Use: This product contains Sodium azide: a POISONOUS AND HAZARDOUS SUBSTANCE which should be handled by trained staff only.

Storage: 4 °C,-20 °C

Expiry Date: 6 months

Images



Western Blotting

Image 1. Western blot analysis of lysate from HepG2 cell line, using Lhx1 Antibody (C-term) (ABIN6242425 and ABIN6577861). (ABIN6242425 and ABIN6577861) was diluted at 1:1000. A goat anti-rabbit IgG H&L(HRP) at 1:10000 dilution was used as the secondary antibody. Lysate at 20 µg.