

Datasheet for ABIN6242426
anti-LHX1 antibody (AA 170-204)[Go to Product page](#)

1 Image

Overview

Quantity:	400 µL
Target:	LHX1
Binding Specificity:	AA 170-204
Reactivity:	Human, Mouse
Host:	Rabbit
Clonality:	Polyclonal
Conjugate:	This LHX1 antibody is un-conjugated
Application:	Western Blotting (WB)

Product Details

Immunogen:	This Mouse Lhx1 antibody is generated from a rabbit immunized with a KLH conjugated synthetic peptide between 170-204 amino acids from the Central region of Mouse Lhx1.
Clone:	RB51316
Isotype:	Ig Fraction
Predicted Reactivity:	C, Rat, X
Purification:	This antibody is purified through a protein A column, followed by peptide affinity purification.

Target Details

Target:	LHX1
Alternative Name:	Lhx1 (LHX1 Products)

Target Details

Background: Potential transcription factor. May play a role in early mesoderm formation and later in lateral mesoderm differentiation and neurogenesis.

Molecular Weight: 44780

UniProt: [P63006](#)

Application Details

Application Notes: WB: 1:1000

Restrictions: For Research Use only

Handling

Format: Liquid

Buffer: Purified polyclonal antibody supplied in PBS with 0.09 % (W/V) sodium azide.

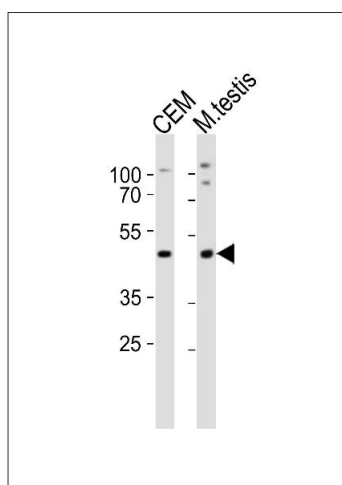
Preservative: Sodium azide

Precaution of Use: This product contains Sodium azide: a POISONOUS AND HAZARDOUS SUBSTANCE which should be handled by trained staff only.

Storage: 4 °C,-20 °C

Expiry Date: 6 months

Images



Western Blotting

Image 1. Western blot analysis of lysates from CEM cell line, mouse testis tissue lysate (from left to right), using Lhx1 Antibody (Center) (ABIN6242426 and ABIN6577790). (ABIN6242426 and ABIN6577790) was diluted at 1:1000 at each lane. A goat anti-rabbit IgG H&L(HRP) at 1:10000 dilution was used as the secondary antibody. Lysates at 20 µg per lane.